

No : 13/2014  
Date : 07 August 2014



## **AIRPORT EMERGENCY SERVICE**

---

### **FIRE PREVENTION CIRCULAR**

---

To All Airport Staff and Organizations

#### **INDISCRIMINATE SMOKING AND DISPOSAL OF CIGARETTE BUTTS**

On 3 August 2014 at about 1848hrs, the Airport Emergency Service (AES) attended to fire outbreak at Changi Airport Terminal 1, Level 3 male toilet located near the viewing gallery. Investigations revealed that indiscriminate disposal of cigarette butts (i.e. dropped light) was the probable cause of fire. The dropped light was squeezed through the vent openings located at the back of a toilet bowl (refer to Annex A – Photographs of fire scene and indiscriminate disposal of cigarette butts). This is the second case of fire in Changi Airport relating to dropped lights in the toilet (refer to fire prevention circular 05/2014 dated 6 May 2014).

2 AES strongly urges the following precautionary measures be taken:

(i) Smoking only at designated smoking areas

Smoking is permitted only at designated smoking areas. Smoking at non-designated areas may lead to the unnecessary turn-out of AES resources. CAG reserves the right to impose a service charge for the unnecessary AES turn-outs due to such negligence and offenders will also be referred to NEA under the “Smoking (Prohibition in Certain Places) (Composition of Offences) Regulations”. Building owners / tenants are to instruct their staff to smoke at designation smoking areas.

(ii) Proper Disposal of Cigarette Butts or Flammable Substances

Due to the presence of combustibles, lighted cigarette butts can result in a fire. Cigarette butts shall be fully extinguished before disposal. Building owners / tenants are to instruct cleaning contractors to ensure that there are no burning embers when transferring refuse to the main collection area. Cleaning contractors are also reminded that disposal of flammable substances into refuse collection points is strictly prohibited

(iii) Ensure proper housekeeping

Contractors are reminded to ensure proper housekeeping, such as upkeep of working tools and materials. Such items shall not be stored in firefighting provision cabinets, stairwells, protected corridors etc.

(iv) Dousing of waste from smoking areas

It is recommended that waste collected from bins at permitted smoking areas is to be doused with water before disposal.

3 Please help disseminate this information to relevant parties and we seek your cooperation in upholding the high fire safety standards at Changi Airport. For further clarifications, you may contact the Airport Emergency Service Fire Prevention Section (AES FPS) at 65412535 or at [fire.safety@changiairport.com](mailto:fire.safety@changiairport.com).

NG KENG LYE  
2 STAFF OFFICER, FIRE PREVENTION  
for DEPUTY SUPERINTENDENT, FIRE PREVENTION  
AIRPORT EMERGENCY SERVICE

**Annex A - Photographs of fire scene and indiscriminate disposal of cigarette butts**



Figure 1 – Front view of affected cubicle



Figure 2 – Burned cabinet within service duct



Figure 3 – Vent at the side of the toilet bowl showing cigarette butts being squeezed through



Figure 4 – Front view of vent beside of the toilet bowl where cigarette butts were squeezed through

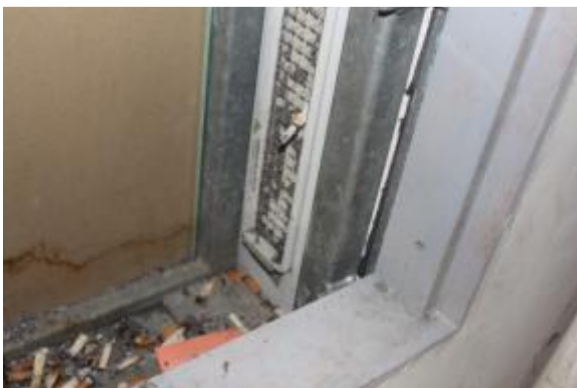


Figure 5 – Evidence of cigarette butts

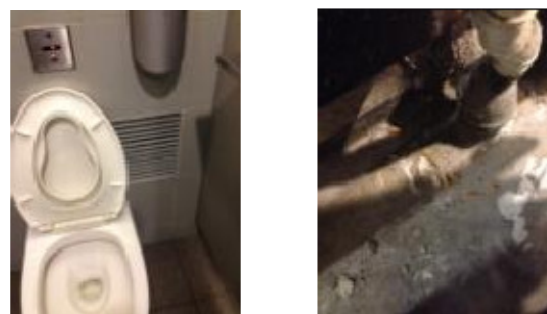


Figure 6 – Cigarette butts found squeezed through vent at T3 male toilets