

No : 06/2015  
Date : 20 May 2015



## AIRPORT EMERGENCY SERVICE

---

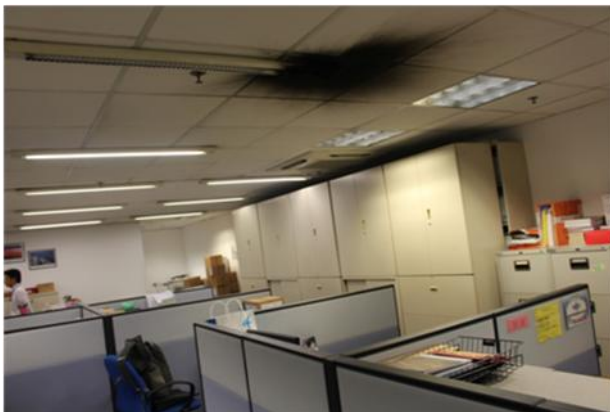
# FIRE PREVENTION CIRCULAR

---

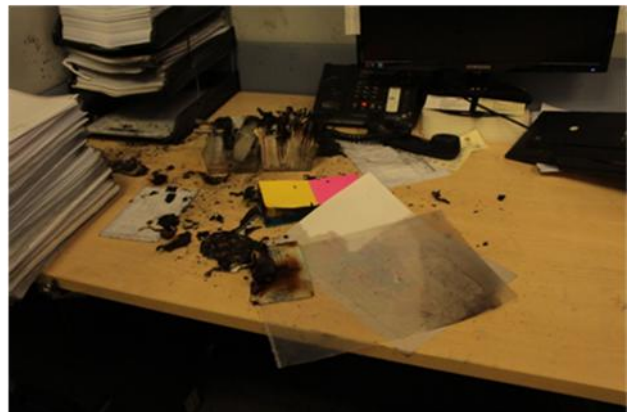
To All Airport Staff and Partners

### FIRE SAFETY ADVISORY ON ELECTRICAL COMPONENTS

Recently, an electrical fire outbreak occurred on 28 April 2015 at one of the tenancy operating in Changi Airport. The fire occurred due to the over-heated magnetic (conventional) ballast that resulted in a partially burnt fluorescent tube and section of the ceiling light fixture. The run down embers from the ceiling light fixture burnt documents and melted some office equipment seated directly below the ceiling light.



Affected ceiling lighting fixture



Embers from the burnt fixture ignited items on desk

2. To minimise the possibility of fires resulting from faulty electrical equipment and the adverse impact on business continuity, the Fire Prevention Section (FPS) wishes to advise tenants in Changi Airport on the following:

- To engaged a Licensed Electrical Worker (LEW) for any electrical works;
- To switch off electrical equipment when they are not in use;
- To check the conditions of the wire regularly. Frayed wires or cracked cords should be replaced and repaired immediately (do not use tape to connect or secure them as they can be overheated and become source of fire;



- Do not lay wiring underneath the carpets or mats and keep them away from hot surfaces;
- To only use electrical plugs and electronic equipment which carry the local SAFETY MARK;



- To ensure combustible materials (newspaper, office documentation, paper cups, etc.) are stored away from electrical sockets;
- Do not use faulty electrical appliances;
- Overloading of electrical circuits is not allowed. In general, the power should not exceed 13 ampere. All circuits should be protected by a proper size fuse or circuit breaker.
- With effect from 1 August 2014, all new lighting fixtures shall be installed with electronic ballast or LED type of lighting systems. Conventional ballast

shall not be used in the terminal buildings lighting systems for any new installation. Users are also required to monitor the usage and life span of the lighting systems and change before its end of life.

- It is recommended to replace the conventional ballast to the electronic ballast. The electronic ballast is energy efficient and therefore is more environmentally friendly. They are smaller in size, weigh less and can be used in single ballast for up to 4 luminaries.

3. Please disseminate this information to your colleagues and we seek your cooperation in upholding the high fire safety standards at Changi airport.

4. For further clarifications, you may contact us at Tel: 6541 2535 or alternatively email us at [fire.safety@changiairport.com](mailto:fire.safety@changiairport.com).

Lim Kim Yeow

Staff Officer, Fire Prevention Section

For Deputy Supt, Fire Prevention Section