

AIRPORT GUIDE



YOUR ESSENTIAL TRAVEL
COMPANION AT CHANGI AIRPORT

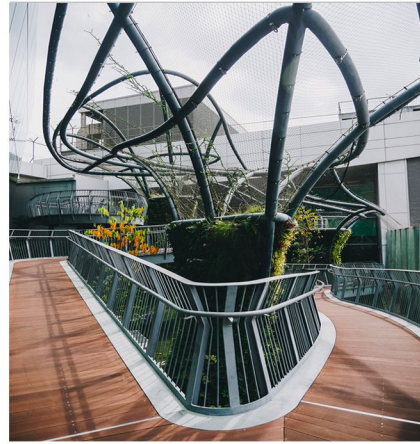
Things to do in Changi Airport

Gardens



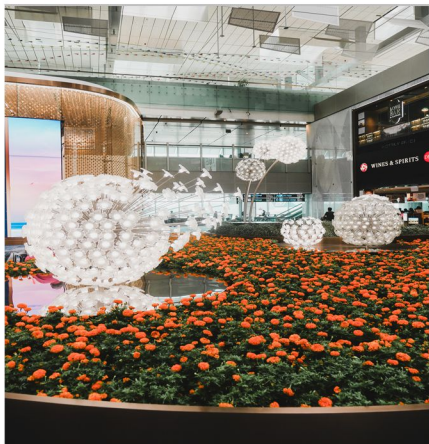
Butterfly Garden
T3 Transit Hall, 24 Hours

We'll be
back soon!



Discovery Garden
T1 Transit Hall, 24 Hours

One of the most beautiful spots in Changi Airport, the Discovery Garden features tree-like sculptures clad in verdant and diverse foliage. Travellers can stroll along the raised walkways to get up close with nature from various vantage points.



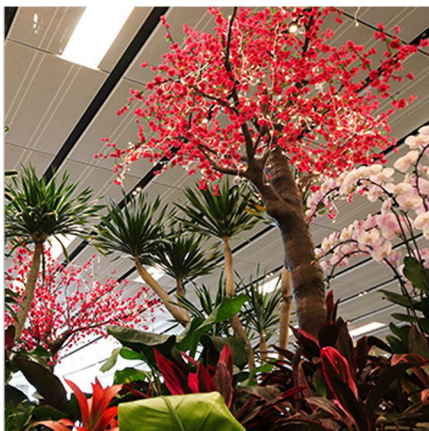
Crystal Garden
T3 Transit Hall, 24 Hours

The Crystal Garden gently integrates nature into the Central Piazza of Terminal 3. The main attraction is 12 spheres of artisan dandelion glass sculptures in various sizes, comprising 1,735 Bohemian glass components—all hand-blown with different finishes.



Waterlily Garden
T1 Transit Hall, 24 Hours

Take a walk around the water lily garden which features water lilies in their natural aquatic environment. Spot the Amazon Water Lily – one of the largest aquatic plants in the world!



Piazza Garden
T1 Transit Hall, 24 hours

The Piazza Garden features seasonal and thematic plant displays throughout the year. The displays celebrate Singapore's various cultural and ethnic festivals with culturally significant flora.



Cactus Garden
T1 Transit Hall, 24 Hours

Bask in the sun and relax with a drink at the bar. At this rooftop garden, enjoy the fine views of more than 100 species of cacti and arid plants from the deserts and dry areas of Asia.

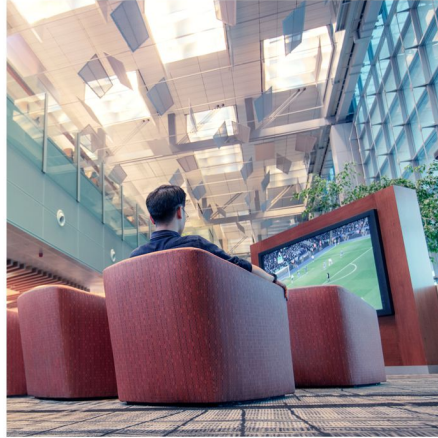
Relaxation



Snooze Lounges

T1, T3 Transit Hall, 24 Hours

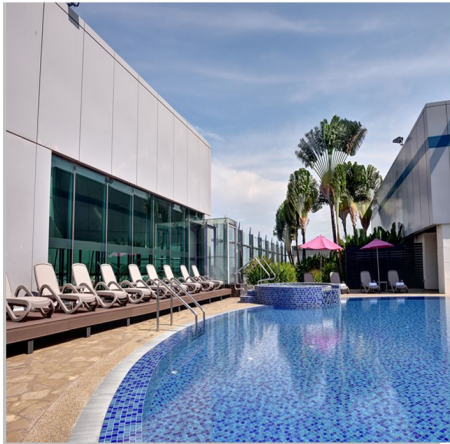
Take a quick nap or just relax in comfortable, free-to-use snooze lounges!



TV Lounges

T1, T3 Transit Hall, 24 Hours

Waiting for a flight? Enjoy your favourite TV shows with great quality sound, while lounging on plush seats.



Swimming Pool

T1 Transit Hall,
Aerotel Airport Transit Hotel

Have a leisurely swim and watch planes take off from the runway at the same time! Located at Aerotel Airport Transit Hotel at Terminal 1, the pool also features a jacuzzi, poolside bar and shower facilities. Travellers can relax and enjoy the facilities while waiting for their next flight.

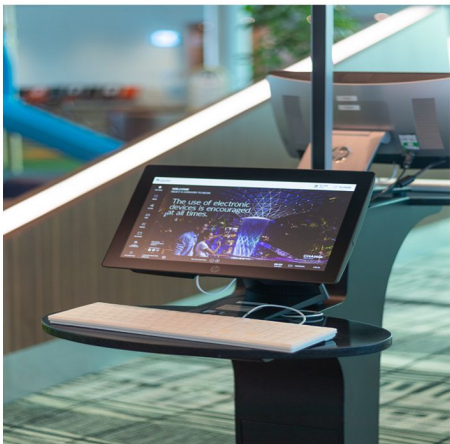
*Charges are applicable



Movie Theatre

T3 Transit Hall, 24 Hours

We'll be
back soon!



Internet Kiosk

T1, T3 Transit Hall, 24 Hours

With many Internet stations available across all terminals and complimentary WiFi@Changi, it's easy to stay connected.



Play Area

T3 Transit Hall, 24 Hours

We'll be
back soon!

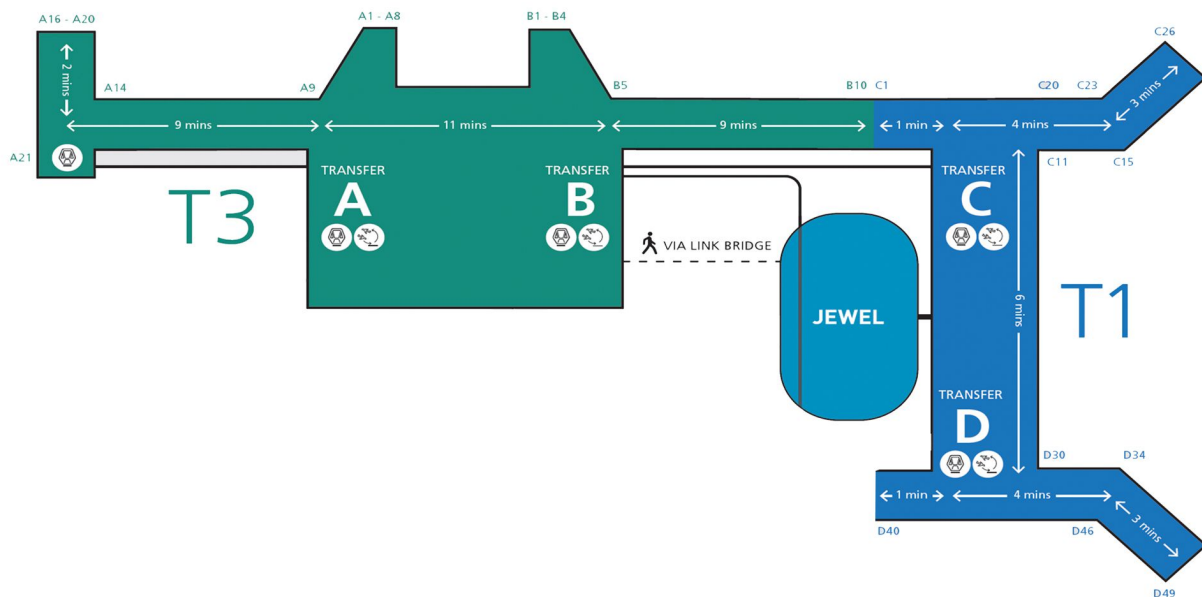
Shopping & Dining



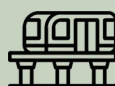
For latest shopping & dining options, click here:

<https://www.changiairport.com/en/shop/shop-and-dine.html>

Connecting between Terminal 1 & 3



Skytrain service between terminals has been suspended till further notice



Travellers may transfer between T1 & 3 on foot within the Departure Transit areas

Getting to Jewel



(Via Public Area)

From T1 :

Jewel's North entrance is connected to T1, Arrival Hall at Level 1.

From T3 :

Link bridge is located at Departure Hall, Level 2 (near Crowne Plaza).

Travel Essentials

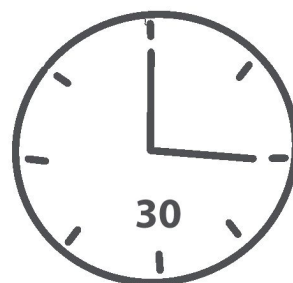


Changi Safe Travel:

- Observe safe distancing & wear a mask at all times
- Masks can be purchased at pharmacies & convenience stores
- Hand sanitisers are available across the terminals
- High contact areas are regularly sanitised

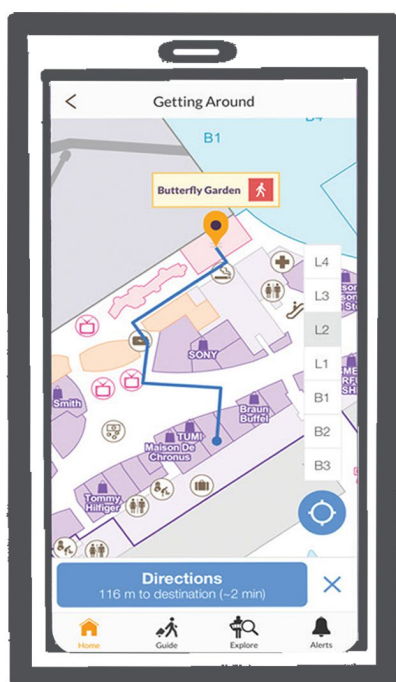


Refer to the Flight Information screens for your departing gate and time.



Be at your departure gate at least 30 minutes before your departure time.

Download the iChangi App



Flight Updates



Changi Rewards
E-Card



Wayfinding



Personalised
Experience

