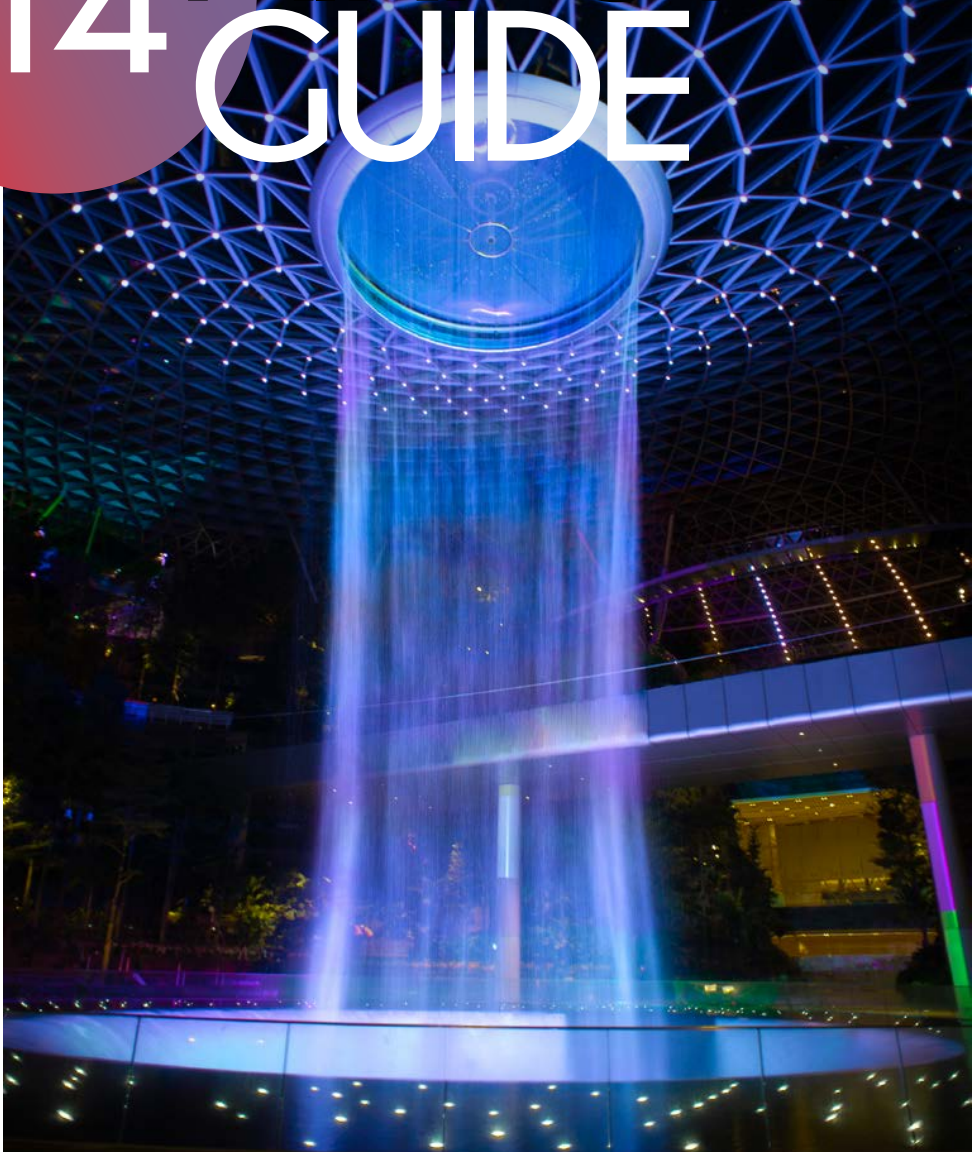


YOUR GUIDE TO CHANGI AIRPORT'S **NEWEST TERMINAL**

# T4 AIRPORT GUIDE



## **HSBC Rain Vortex**

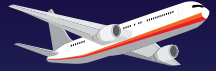
Jewel's centrepiece attraction is the 40m HSBC Rain Vortex – the world's tallest indoor waterfall. Enjoy the light-and-sound show every hour from 7.30pm to 12.30am. To get to Jewel, take the complimentary airport shuttle to Terminal 2 and walk over to Jewel via the link bridge.

CHANGI



BEST OF SINGAPORE

From Singapore. For Everyone.



Whether you are a traveller who wants to bring back a memory of your trip, or someone looking to share a piece of home with people overseas, Changi LoveSG has it.

### SG Food

Treat yourself to authentic flavours from the foodie's paradise. Here at Changi, you can 'da bao' (or takeaway) your favourite local delicacies, and bring them with you on your travels.



### SG Souvenirs

Whether it's for gifting or keeping, find a collection of iconic mementos that will bring back fond memories of Singapore.



Discover everything local at Changi loveSG.  
**Scan to find out more!**

JUST GIVE YOURSELF A BIG HUG!



# UNIQUE ATTRACTIONS

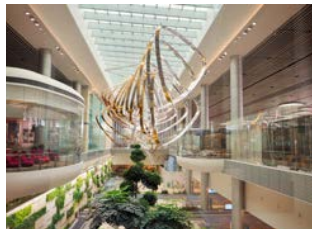
Be mesmerised by the unique cultural and architectural features of T4!



## Heritage Zone

*Transit Hall*

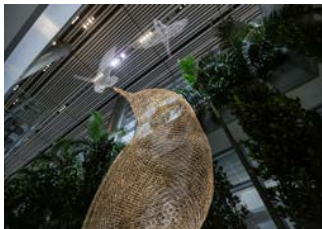
Catch the 2 musical sets of Peranakan Love Story and Nanyang Blossom, played at every 15 minutes interval. It is a collaboration with local artistes Dick Lee, Adrian Pang, Benjamin Kheng and Koh Chieng Mun.



## Petalclouds

*Transit Hall / Public Area*

This large-scale kinetic sculpture consists of 6 structures suspended 200m across T4's Central Galleria. Its movement is synchronised to animated lighting and music, designed to enthral passengers and visitors.



## Les Oiseaux

*Public Area*

This beautifully crafted stainless steel wire sculpture features three birds symbolising the connection between sky and earth, between dream and reality, and reflect the poetry of daily life.



## Steel in Bloom

*Transit Hall*

The garden's 6-metres high centrepiece features intricate botanical motifs modelled in steel. This structure is juxtaposed with plants that have inspired its design, creating a sense of contrast in harmony.

# T4 FLIGHT INFORMATION



Refer to the Flight Information screens for your departing gate and time.



Be at your departure gate at least 30 minutes before your departure time.



Transit passengers who have cleared Arrival Immigration will not be able to enter the Transit Hall until they have checked-in for their connecting flight departing from T4.

# TRANSIT & TRANSFER

## ENJOY A FREE SINGAPORE TOUR

If you have at least 5.5 hours to spare till your connecting flight at Changi Airport, consider joining our Free Singapore Tour\*!

This 2.5-hour guided bus tour runs daily at regular times, and introduces visitors to the vibrant culture, background, arts and architecture of Singapore.



### Heritage Tour

Brings you through Singapore's past and present as we visit colonial and cultural districts with two short stopovers at the Merlion Park and Kampong Glam.

### City Sights Tour

Showcases modern Singapore with a short stopover at the Merlion Park, against the magnificent cityscape of the Singapore Flyer, Marina Bay Sands and the Esplanade. Have another short stopover at Gardens by the Bay where you will find the magical Avatar-like Supertrees.

Reporting Time	Tour Timings	Flight Departs After
8.00am	9.00am - 11.30am	1.30pm
9.00am	10.00am - 12.30pm	2.30pm
11.30am	12.30pm - 3.00pm	5.00pm
1.30pm	2.30pm - 5.00pm	7.00pm
3.00pm	4.00pm - 6.30pm	8.30pm
5.00pm	6.00pm - 8.30pm	10.30pm
6.30pm	7.30pm - 10.00pm	12.00am

### Location of registration booths (Transit Hall)

**T2** Transit Hall, between Transfer Lounge F and Skytrain to Terminal 3 near the escalator to Arrival Immigration (Level 2)

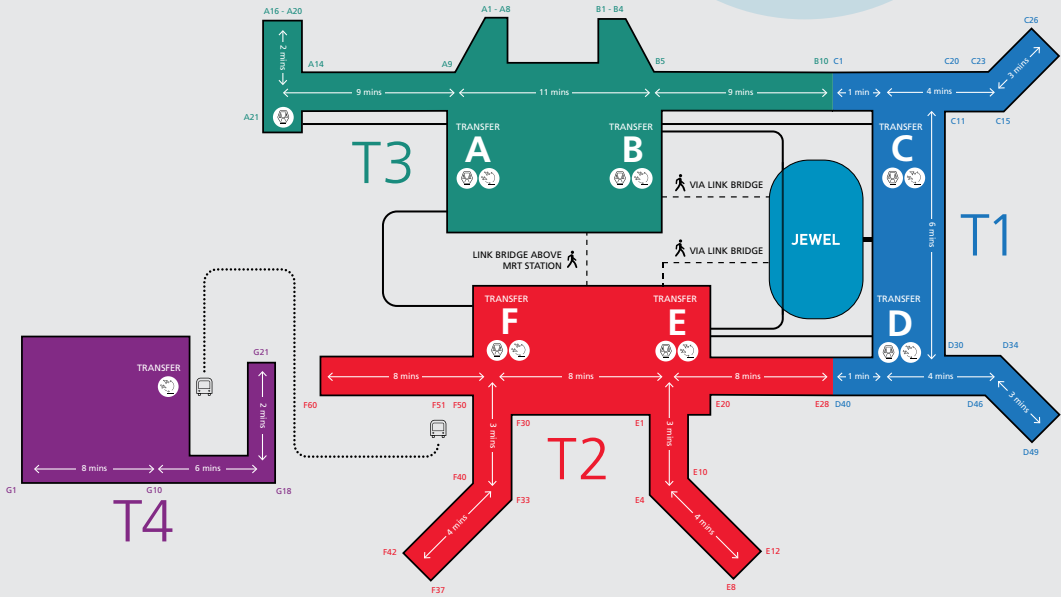
**T4** For passengers arriving in Terminal 4, take the transit shuttle bus to T2 for registration. You may enquire at the nearest Information Counter for details.



\* To register, please remain in the Transit Hall and do not clear immigration. Seats are subjected to availability on a first-come, first-served basis, and other terms and conditions apply.



# CONNECTING BETWEEN TERMINALS



## Skytrain connecting

**T1, T2 and T3**

*Operates from 5.00am to 2.30am*

T1, T2 and T3 are connected by a free Skytrain service at both Transit Hall and Public Area.

## Public Shuttle Bus connecting

**T1, T2 and T3**

*Operates from 2.30am to 5.00am*

During non-operational hours of the Skytrain, a free public shuttle bus service will be provided for connection between T1 – T2 and T1 – T3.

Please proceed to the following pick up points:

At T1: Departure Hall Door 5

At T2: Departure Hall Door 1

At T3: Departure Hall Door 8

For connection between T2 – T3, passengers can transfer by foot using the link bridge above MRT station.

## Transit Shuttle Bus between

**T4 and T3**

*Operates 24-hours*

For passenger with a valid onward boarding pass.

Please proceed to the following shuttle bus pick up points:

At T4: Transfer Lounge

At T2: Gate F51

## Public Shuttle Bus between

**T4 and T2**

*Operates 24-hours*

Please proceed to the following shuttle bus pick up points:

At T4: Arrival Hall Door  
(Opposite Clinic)

At T2: Arrival Hall Door 1

## Getting to Jewel

**From T1**

Jewel's North entrance is connected to T1, Arrival Hall at Level 1.

**From T2**

Make your way to Departure Hall, Level 2 (Row 1) and take the escalator to Level 3 to access the link bridge to Jewel.

**From T3**

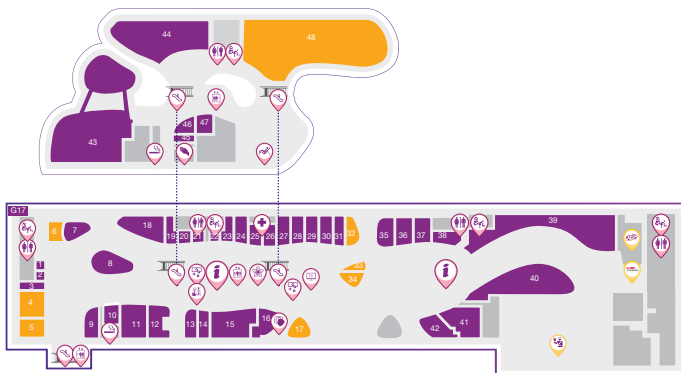
Link bridge is located at Departure Hall, Level 2 (near Crowne Plaza).

**From T4**

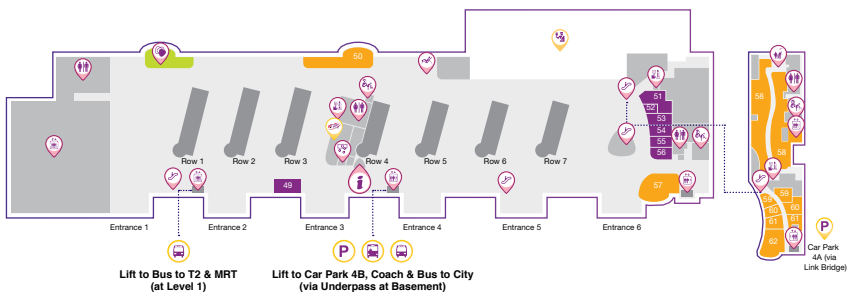
Take the complimentary Airport Shuttle Bus to T2 and make your way to Departure Hall, Level 2 (near Row 1). Take escalator to Level 3 to access the link bridge to Jewel.

# TERMINAL MAP

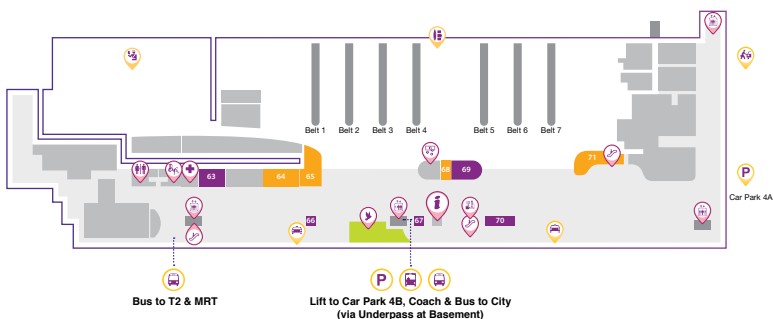
## Transit Hall Level 2



## Departure Level 2



## Arrival Level 1



## LEGEND

- |                 |                |                    |               |                |
|-----------------|----------------|--------------------|---------------|----------------|
| Arrival Pick-up | Bus            | Cash Machine (ATM) | Lift          | Steel in Bloom |
| Car Park        | Coach          | Clinic             | Money Changer | Toilet         |
| Immigration     | Odd-size       | Escalator          | Petal Clouds  | TV Lounge      |
| GST Refund      | iShopChangi    | Information        | Prayer Room   | Smoking Room   |
| Taxi            | Baby Care Room | Les Oiseaux        | Snooze Lounge |                |

# TERMINAL DIRECTORY

## TRANSIT |

### General operating hours in transit hall:

Retail & Services and Food & Beverage 6am – 12am, unless otherwise stated.



### RETAIL & SERVICES

#### LEVEL 2

14	adidas Homecourt
19	Airport Pharmacy
13	Avenue Kids
1	Bee Cheng Hiang
2	Bengawan Solo
43	Blossom - SATS & Plaza Premium Lounge
44	Cathay Pacific Lounge
37	Charles & Keith
46	Cheers
35	Coach
7, 39	Cosmetics & Perfumes by The Shilla Duty Free
8	Discover Singapore
20	E-Gadget @ T4
3	Eu Yan Sang
35	Furla

42	Gassan Watches
25	Giordano
21	iStudio
27	Kate Spade New York
24	Lacoste
22	Luvenus
36	Michael Kors
10	Moleskine
31	Montblanc
28	Pandora
26	Pazzion
47	Peranakan Gallery
15	The Fashion Place
29	Trunk & Co.
45	Smarte Carte Baggage Storage
30	Sunglass Hut
23	Swarovski
9	Taste Singapore
41	The Cocoa Trees
38	TWG Tea Boutique
11	Uniqlo

18, 40	Wines & Spirits by DFS
16	WH Smith
12	ZAKKASG



### FOOD & BEVERAGES

#### LEVEL 2

4	Curry Times by Old Chang Kee
5	Heavenly Wang
34, G17	Paris Baguette
6	Texas Chicken
33	The Coffee Bean & Tea Leaf
17	Tiger Den
32	Treasures Yi Dian Xin by Imperial Treasure

#### LEVEL 2M

48	International Food Hall
----	-------------------------

## PUBLIC |

### General operating hours for all public area:

Retail & Services 7am – 11pm, Food & Beverage 10:30am – 11pm, unless otherwise stated.



### RETAIL & SERVICES

#### LEVEL 1

63	Baggage Storage
70	Big Bus Tours
67	Car Rental – Avis / Budget
70	Changi Meet & Greet ⌚ 6am – 12am
66, 70	Changi Recommends  East Kiosk ⌚ 7am to 10pm – West Kiosk
69	Cheers
70	Starhub

#### LEVEL 2

55	Bakery Cuisine
56	Bee Cheng Hiang
49	Changi Recommends
53	Cosmetics & Perfumes by The Shilla Duty Free
52	E-Gadget Mini by Sprint-Cass
54	Kaboom
51	Watsons Personal Care Store

64	Ma Mum ⌚ 7am – 1am From mid Sep 2019
71	Old Street Bak Kut Teh ⌚ 8am – 10pm
65	Paris Baguette

#### LEVEL 2

57	O'Coffee Club Xpress
50	Starbucks Coffee

#### LEVEL 2M

60	ANDES by Astons
58	Food Emporium ⌚ 7am – 11pm
61	London Fat Duck
62	McDonald's
59	Sushi Goshin



### FOOD & BEVERAGES

#### LEVEL 1

68	LiHO ⌚ 7am – 11pm
----	----------------------

## TRANSIT HALL



Changi LoveSG has the best Taste of Singapore for the foodie travelers, from local delights, delicacies, traditional culinary to food souvenirs and more.



### Taste Singapore

Taste Singapore offers a delightful range of Singapore's most iconic delicacies – from durian chocolates, Merlion-shaped mango cookies and pineapple tarts to prawn rolls. Remember to buy these special souvenirs for your friends and family back home.



### Eu Yan Sang

A heritage brand since 1879, Eu Yan Sang is a leading brand in the health and wellness space, with an established reputation in Traditional Chinese Medicine – retailing fine quality Chinese herbs, Chinese proprietary medicine, health food and TCM supplements. Eu Yan Sang products are synonymous with quality consistency and modern and scientific approaches in TCM.



### Heavenly Wang

Set in retro Singapore coffee shop décor with metal shelves stocked with biscuit tins, colourful stools and white brick walls, where tradition meets modern comforts. Heavenly Wang soothes diners' senses with a menu of traditional kaya toast, aromatic kopi, Chinese pastries and other local favourites.



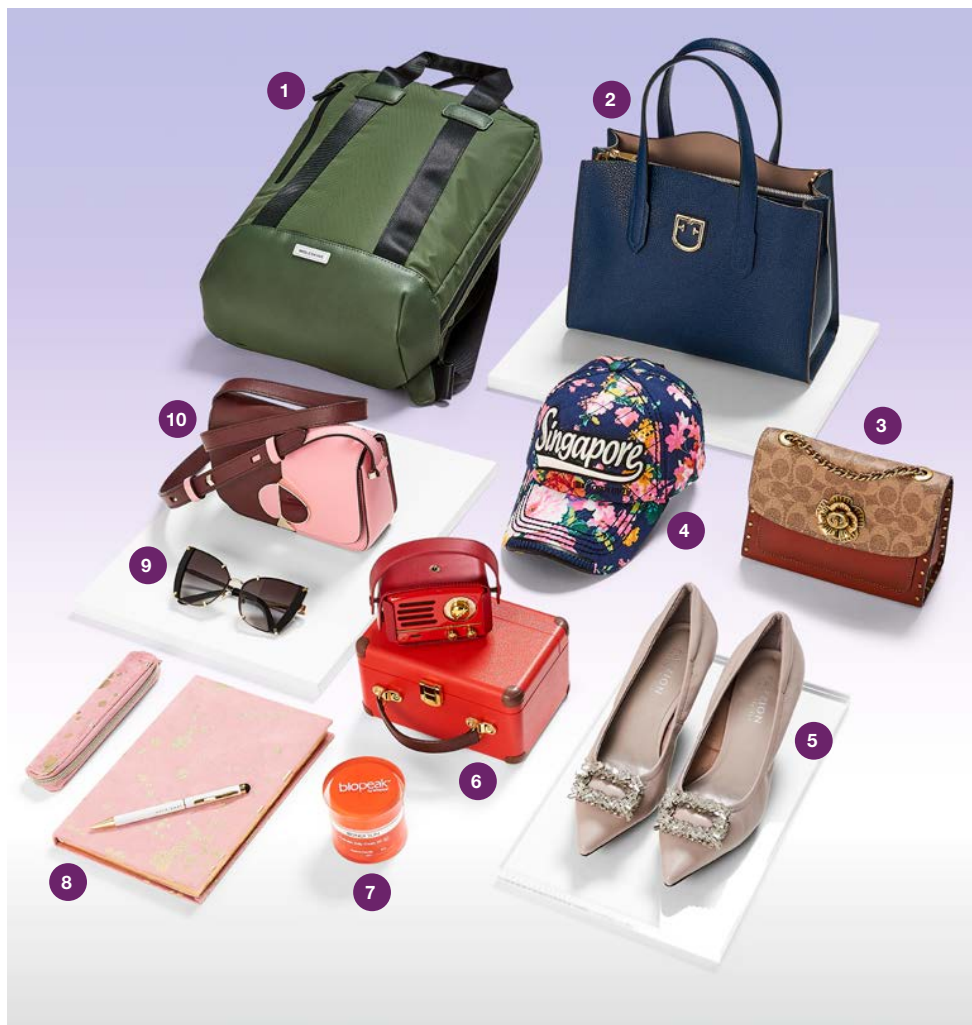
### Curry Times

Curry Times offers authentic home-cooked curry dishes set in nostalgic décor reminiscent of our glorious culinary traditions. Originating from the famous local curry puff chain Old Chang Kee, Curry Times retains the traditions of excellent curry making. Try the signature Curry Chicken, masterfully prepared with passion and is filled with fresh, succulent chicken and a spicy rich curry broth simmered to perfection.



# AWESOME GIFT IDEAS

Pick up these lovely items and surprise your special someone.



**1.** Vertical Device Bag, \$170 from *Moleskine*; **2.** Furla Lodovica Tote Bag, \$598.13 from *Furla*; **3.** COACH Signature Parker Shoulder Bag, \$556.07 from *Coach*; **4.** Floral Singapore Cap, \$26.90 from *Discover Singapore*; **5.** Embellished Pointy Front Heels, \$86 from *Pazzion*; **6.** Muzen FM Bluetooth Speaker with Box, \$129.91 from *E-Gadget @ T4*; **7.** Bondi Sun™ Australian Daily Sunscreen SPF 30+, \$39.95 from *Airport Pharmacy*; **8.** Moderno A5 Notebook, \$28; Moderno Pen and Pouch Set, \$32 from *WH Smith*; **9.** Dolce & Gabbana Faceted Butterfly Sunglasses, \$476.64 from *Sunglass Hut*; **10.** Nicola Bicolor Small Shoulder Bag, \$551.40 from *Kate Spade New York*

# DELICIOUS DELIGHTS

Head over to T4 for a quick bite or a leisurely meal.

## Sweet Treats @ Food Emporium *Level 2M*



### Rainbow Lapis

From handcrafted Nonya Kuehs to traditionally baked Kueh Lapis, Rainbow Lapis celebrates the heritage delicacies of Singapore using the finest ingredients that are guaranteed to satisfy your taste buds.



### Partea

This modern tea joint redefines tea appreciation experience by combining freshly-cut fruits with Chinese tea to create a myriad of multi-coloured tea brews. The refreshing brew is perfect to quench your thirst in sunny, humid Singapore weather. Must try drinks include their Rainbow Tea and Pu'Er Rose Tea.



### ANDES by Astons

*Level 2M*

ANDES by Astons is a halal steakhouse. At ANDES, we believe that great food can be offered at great prices. Therefore, we always insist on using quality ingredients and serving generous portions for all our food. Our menu includes a wide selection of steak, chicken and seafood with side dishes; definitely something to satisfy all!

### London Fat Duck

*Level 2M*

London Fat Duck offer signature dishes including London Roast Duck, Black Pepper London Duck Bun and Wanton Noodle Soup. Their delicious duck meats are kept tender and juicy while the skin remains crispy and flavourful, using modern technology and a heritage recipe to create a whole new roast duck experience. Vacuum-packed whole London Roast Duck (\$58.80) is also available – good for gifts for family or friends.



WE'RE ABSORBING **GST** ON YOUR SHOPPING, ONLY FOR CHANGI REWARDS MEMBERS

# MUST BUYS

Check out our product recommendations for the season.



1. Mini EZ Chicken (SG Series), \$19.80 from Bee Cheng Hiang;
2. TR- iBASS7 Stereo Sound Double Speaker, \$78 from E-Gadget Mini;
3. 12" Captain America Plush and 12" Ironman Plush, \$26.90 each from Kaboom

**iSHOP CHANGI**  
SHOP ONLINE. SHOP TAX-FREE.

iShopChangi.com allows you to shop without any fuss 30 days in advance and up to 12 hours before you fly! The e-store allows you to browse and shop over 800 brands across 4 terminals so you get to enjoy the true freedom of duty-free retail therapy!



Shop online from a range of duty-free products at iShopChangi.com, before you depart from or arrive at Changi Airport.



Collect your purchases from the designated iShopChangi Collection Centres before departing or upon arrival at The Shilla Duty Free and DFS stores located at the baggage claim hall.

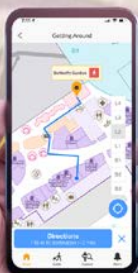


Fly with ease!



Scan to shop now!

## Download the iChangi App



Flight Updates



Changi Rewards E-card



Wayfinding



Personalised Experience



TOP

5

THINGS  
TO DO  
IN JEWEL



01

**DISCOVER  
INSTA-WORTHY  
PHOTO SPOTS**

With stunning installations and breath-taking views at different parts of Jewel, endless photo opportunities await! Don't forget to add #hereatJewel and #jewelchangiairport and tag us @JewelChangiAirport when you upload them.

02

**IMMERSE  
YOURSELF IN  
NATURE**

Hike up the 4-storey Shiseido Forest Valley and discover intriguing plants from all around the world. With more than 900 trees and palms, and about 60,000 shrubs, immerse yourself in this garden wonderland.

03

**EXPLORE JEWEL'S  
CANOPY PARK**

Experience wonder at this 14,000 sqm recreational park which features world-class play attractions for the young and young-at-heart.

04

**DINE IN  
THE GREAT  
OUTDOORS,  
INDOORS**

Dine in airy terraces set in pleasant gardens, with views to savour and menus to tempt. There's all the charm of al fresco dining in Singapore set in cool comfort.

05

**PICK UP  
UNIQUELY  
SINGAPORE GIFTS**

Acquaint yourself with Singapore through unique collections or browse a heady mix of contemporary and traditional home-grown brands to bring home a piece of Singapore!

**Changi Rewards**

Sign up for FREE membership now & get to enjoy these benefits:



**Shopping  
Rebates**

Earn points to offset your next purchase



**Exclusive  
Events**

Be invited to members-only events



**GST Absorbed**

Enjoy GST Absorbed shopping at public areas in Changi Airport



**Points to Miles**

Convert points to KrisFlyer Miles



Scan to sign up now!  
[www.changirewards.com/register.aspx](http://www.changirewards.com/register.aspx)

Connect with us on social media



@ChangiAirport



youtube.com/changiairport



Review us on TripAdvisor

All prices are correct at the time of print. Prices are in Singapore Dollar (S\$), excluding GST. Items featured are subject to stock availability.

While every effort has been made to ensure that the information in this brochure is accurate at the time of print (June 2019), Changi Airport Group (Singapore) Pte. Ltd. shall not be held liable for any dissatisfaction, damages, loss, injury or inconvenience arising from the contents of this brochure.

Copyright © Changi Airport Group (Singapore) Pte. Ltd. 2019. All rights reserved.