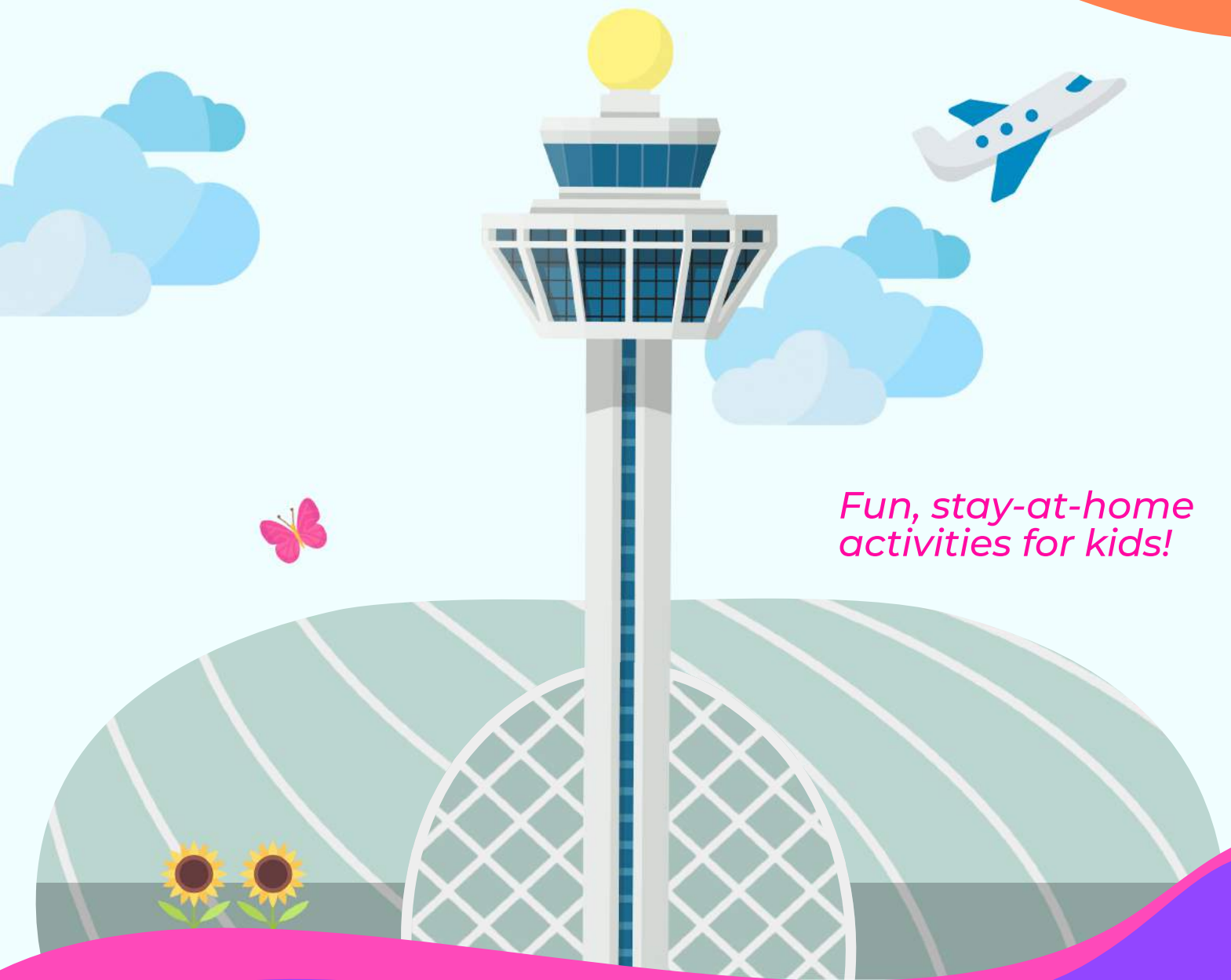


CHANGI KIDS CLUB

Activity Book 1



*Fun, stay-at-home
activities for kids!*

Name

CONTENTS

| | |
|----------------------------------|-----------|
| Cover Page | 1 |
| Contents | 2 |
| Activities | |
| <i>For 3-5 Years Old</i> | |
| Butterfly Garden Colouring | 3 |
| Cactus Garden Colouring | 4 |
| Sunflower Garden Colouring | 5 |
| Spot the Error | 6 |
| <i>For 5-7 Years Old</i> | |
| Match the job | 7 |
| Pack your own Luggage | 8 - 11 |
| <i>For 7-10 Years Old</i> | |
| Baggage handling process | 12- 13 |
| Crossword puzzle | 14 -15 |
| <i>For the Family</i> | |
| Make your own plane at home | 16 - 18 |
| Answers | 19 |
| Spot the error | 20 |
| Match the job | 21 |
| Baggage handling process | 22 |
| Crossword puzzle | 23 |



COLOUR YOUR OWN BUTTERFLY GARDEN



Did you know?

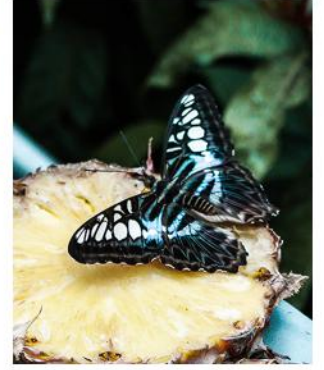
Ripe pineapples and red gerbera flowers (or daisies) in Changi's butterfly garden are covered in a honey mixture for butterflies to feed on.

Forest butterflies feast on pineapples, while the more vibrant-coloured butterflies are drawn to honey for nectar.

Changi also has its very own butterfly, the Common Rose Butterfly, *Pachliopta aristolochiae asteris*. Try to keep a look out for it the next time you're there!



Nectar-eating butterflies



Forest butterflies



Changi's Common Rose Butterfly



Terminal 3
Transit



COLOUR YOUR OWN CACTUS GARDEN



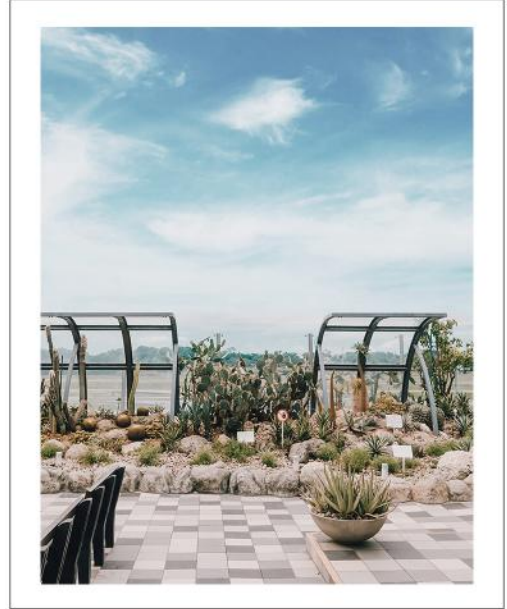
Did you know?

Many cacti at Changi Airport are edible and have medicinal benefits.

Some species of *Opuntia*, such as the *Prickly Pear Cactus*, have yummy stems and fruit that can be eaten raw or cooked. They can even be used to make candy and jam!

The juice from the plant is also used as medicine to treat diabetes and heal wounds.

Do remember to be careful when you visit our Cactus Garden. Many cacti have pricks which may injure you!



Terminal 1 Transit



COLOUR YOUR OWN SUNFLOWER GARDEN



Did you know?

All sunflowers at the Sunflower Garden are grown from seeds in Changi Airport's very own nursery. Each plant takes between 60 and 90 days to grow, before they are planted in the garden.

Sunflowers are not single flowers, but a combination of more than 3,000 mini flowers called a capitulum!



Terminal 2 Transit



SPOT THE ERROR

What are you not allowed to bring on board a flight?



Circle the items that you're not allowed to bring on a plane in your carry-on bag!

MATCH THE JOB

Draw lines to match the job at Changi to the right task!

Security Officer

Keeps the carpets clean and tidy

Cleaning Staff

Makes sure the terminal is running smoothly

Baggage Handler

Transfers baggage to plane

Duty Terminal Manager

Keeps the airport safe from threats

Air Traffic Control Officer

Maintains and chooses plants around Changi

Horticulturist

Gives pilots landing and take-off instructions

Airport Emergency Services (AES) Staff

Responds to fires and rescue operations



Did you know?

Changi Airport Group, the operators of Changi Airport, employs over 1800 people! That includes over 500 staff in Airport Emergency Services - the group of people responsible for responding to rescues and fires around Changi Airport. These people work 24 hours a day, 7 days a week to ensure any accidents are quickly attended to.

PACK-YOUR-OWN LUGGAGE

Step 1: Build Your Luggage (Page 9)

- a. Print out template.
- b. Cut out the white parts.
- c. Fold along the dark brown lines.

Step 2: Decorate Your Luggage (Page 10)

- a. Print out sticker cut-outs.
- b. Cut out the sticker cut-outs
- c. Using glue, paste the sticker cut-outs on your luggage.

Step 3: Get Packing! (Page 11)

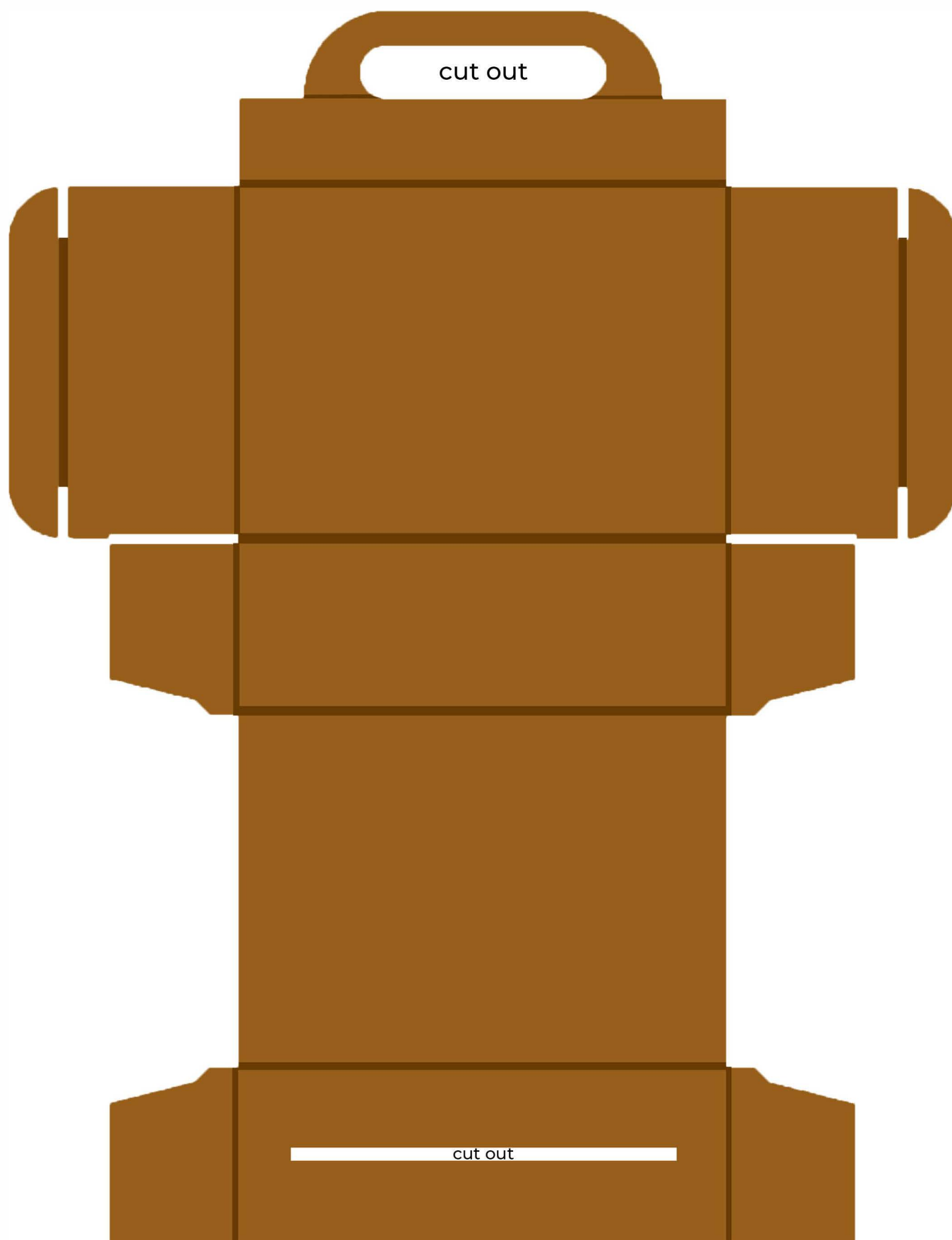
- a. Print out items.
- b. Cut out the items.
- c. Pack your luggage.



FINAL PRODUCT

PACK-YOUR-OWN LUGGAGE

LUGGAGE TEMPLATE

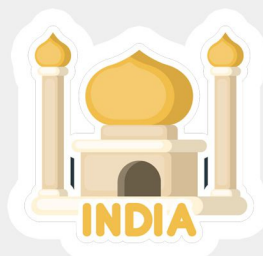


do not print this page double-sided



PACK-YOUR-OWN LUGGAGE

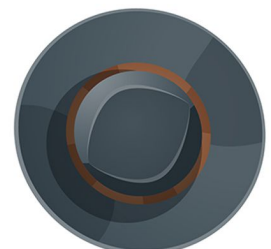
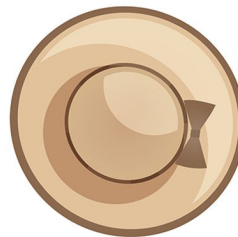
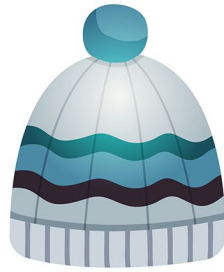
LUGGAGE STICKERS



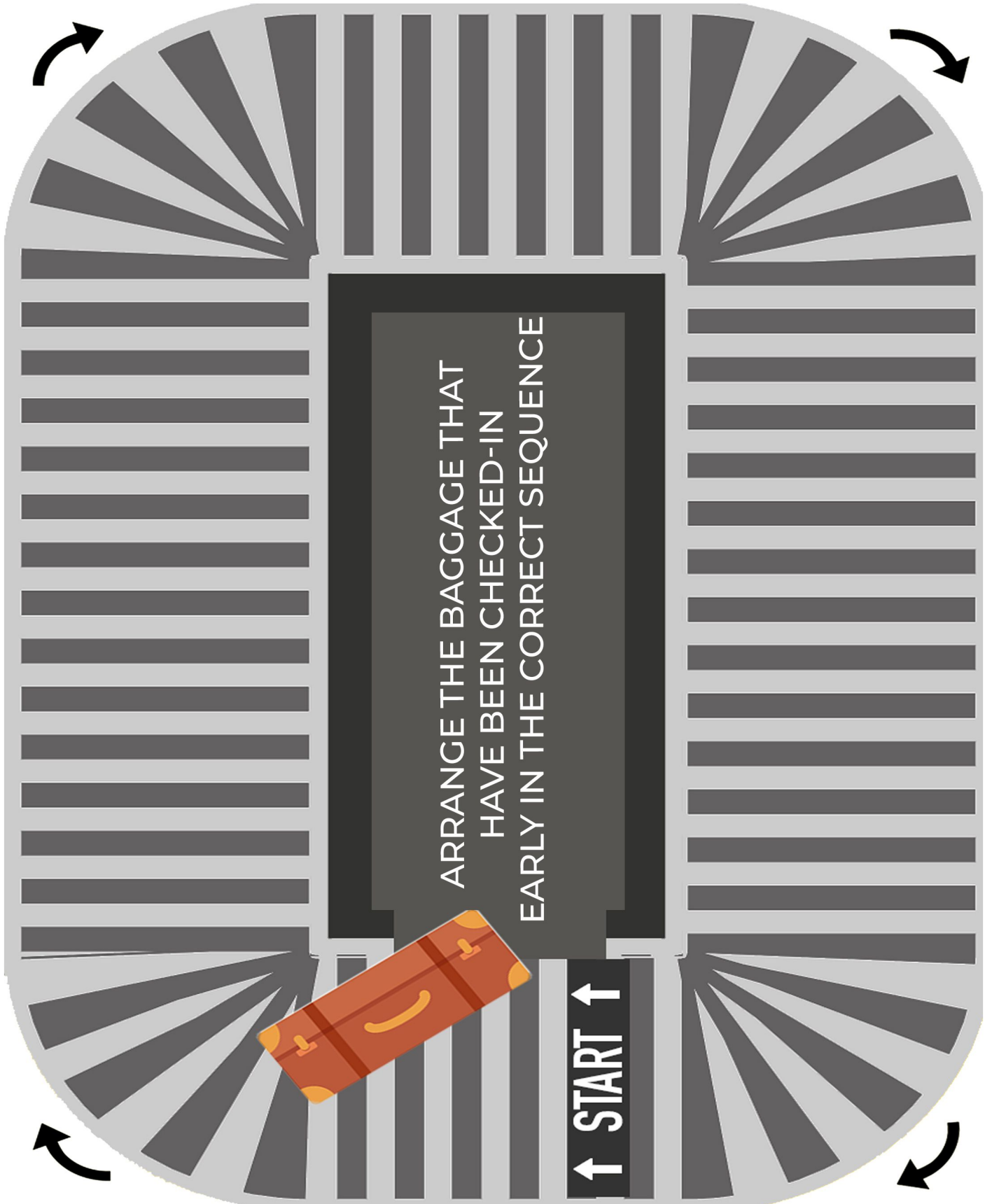
PACK-YOUR-OWN LUGGAGE

LUGGAGE ITEMS

Cut them out and place them in your luggage!

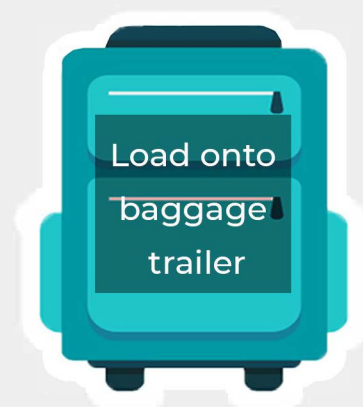
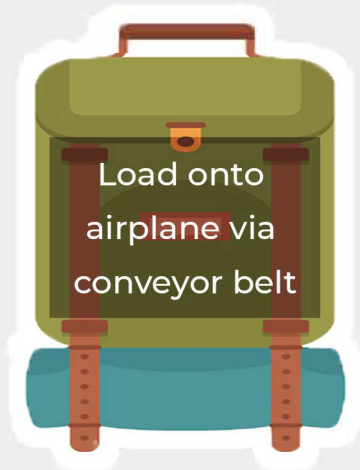
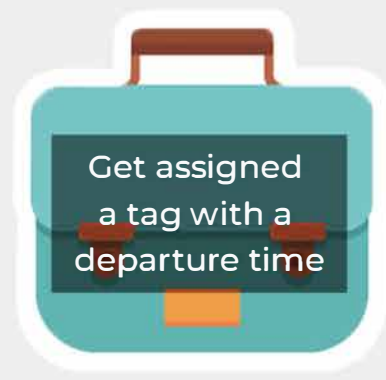
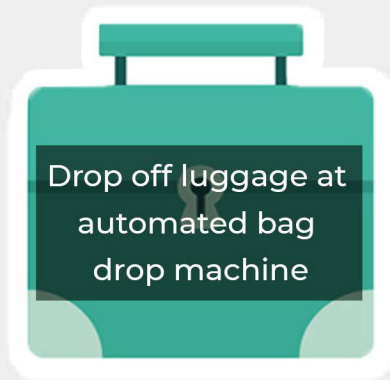


BAGGAGE HANDLING PROCESS



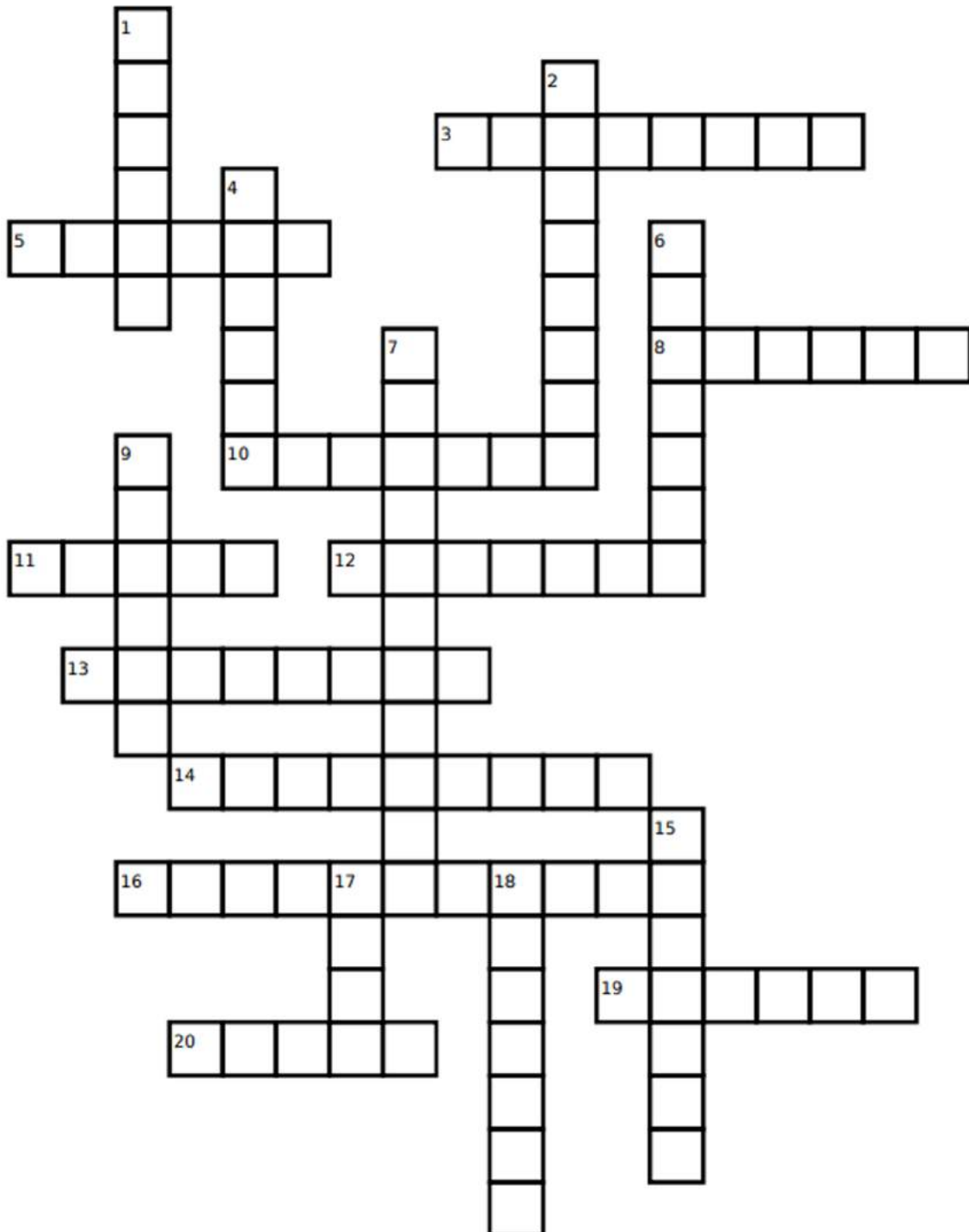
BAGGAGE HANDLING PROCESS

Cut out these baggages!



CROSSWORD PUZZLE

Complete the Changi-themed crossword puzzle!



Did you know?

From April 2018 to March 2019, there were over 66 million passengers that went through Changi Airport. That's more than 10 times the population of Singapore! Besides arriving or departing from Changi Airport, there are also many transiting passengers - they land at Changi Airport to take another flight towards another destination.

Clues are on the next page!

CROSSWORD PUZZLE

Clues

Down:

Aircraft facts

1. The American aircraft manufacturing company
6. The section of the plane where pilots control the plane from
7. The part of the plane that touches the floor first when landing
9. The European aircraft manufacturing company
15. The two cylinder-shaped machines on each wing
18. The process in which an aircraft leaves the ground

Changi facts

2. The document needed to leave or enter a country
4. The floors around Changi Airport's transit areas are covered with this
17. The area where passengers wait to board their flight

Across:

Aircraft facts

3. The equipment on each seat to keep passengers safe
5. The road where aircrafts take off
11. In addition to passengers and luggage, airplanes also carry this
12. The bent/folded tip of an aircraft's wing
13. The main body of an aircraft
19. Where passengers can look out from the aircraft

Changi facts

8. This is a prickly plant that is common in dry deserts and can be found in Terminal 1
10. The process in which passengers land at the airport to take another flight to another destination
14. There is a garden full of this flying colourful insect in Terminal 3
16. The zone where passengers' passports are stamped before they collect their luggage at arrival
20. The building with the Rain Vortex at Changi Airport

MAKE YOUR OWN PLANE AT HOME!

Learn about the different parts of an aircraft too



Materials you will need:

Cardboard of an A4 cereal box
Straw
Tape
Scissors
Small Heavy Object
Paint (Optional)

A STEP BY STEP GUIDE

Head over to <https://bit.ly/changidiyplane> or scan this QR code for the full instructional video!



Phase 1: Wing/Winglet



1. Cut an A4 piece of cardboard and half it, length wise.



2. For each half of the wing, measure the halfway points of each half and fold into 2 equal parts



3. Bend one side of the cardboard using a long object to give the wings its shape



4. To make the wing's triangular shape, mark out the halfway point of one side of the wing, draw a line to create a triangular shape, and cut it out. Tape to secure.

Phase 2: Tail



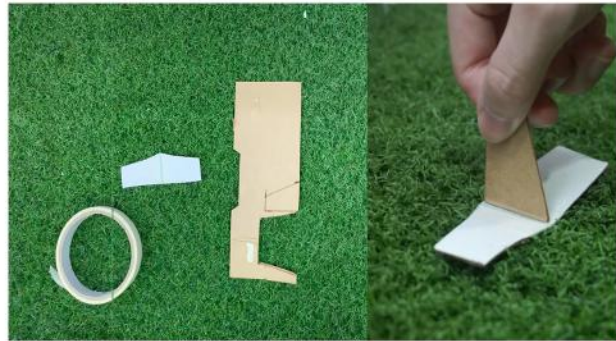
5. For the winglet, mark out a bend $\frac{1}{3}$ way from the tips, cut the top fold and curve the cardboard upwards. Tape to secure.



6. Take the remaining sheet of cardboard and fold a small section into half. Mark and cut out the shape above.



7. Unfold the shape, cut the folded part into half to form the base of the tail. Tape it length-wise to secure.



8. Mark out the top of the tail, ensuring that its length is the same as the base. Attach the top to the base, forming the shape above. Tape to secure.

Phase 3: Assembling the plane

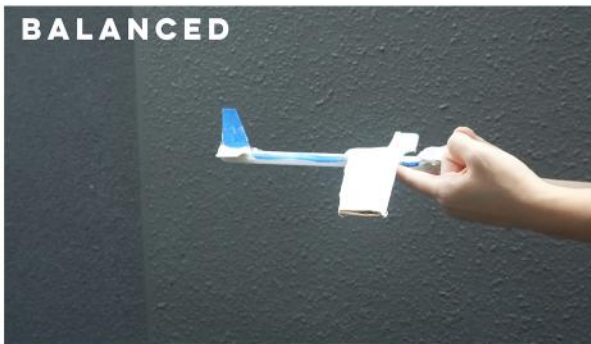


9. Tape the wings together. Attach a straw to the bottom of the wings. Tape the wings $\frac{1}{3}$ way from the top. Attach the tail to the lower end of the straw. Secure it tightly with tape.



10. Add small heavy objects to the nose of the plane





11. To check for balance, place index fingers on the innermost parts of the wing. If the plane slants backwards, add more weights. If plane is balanced/leans forward, you are good to go!



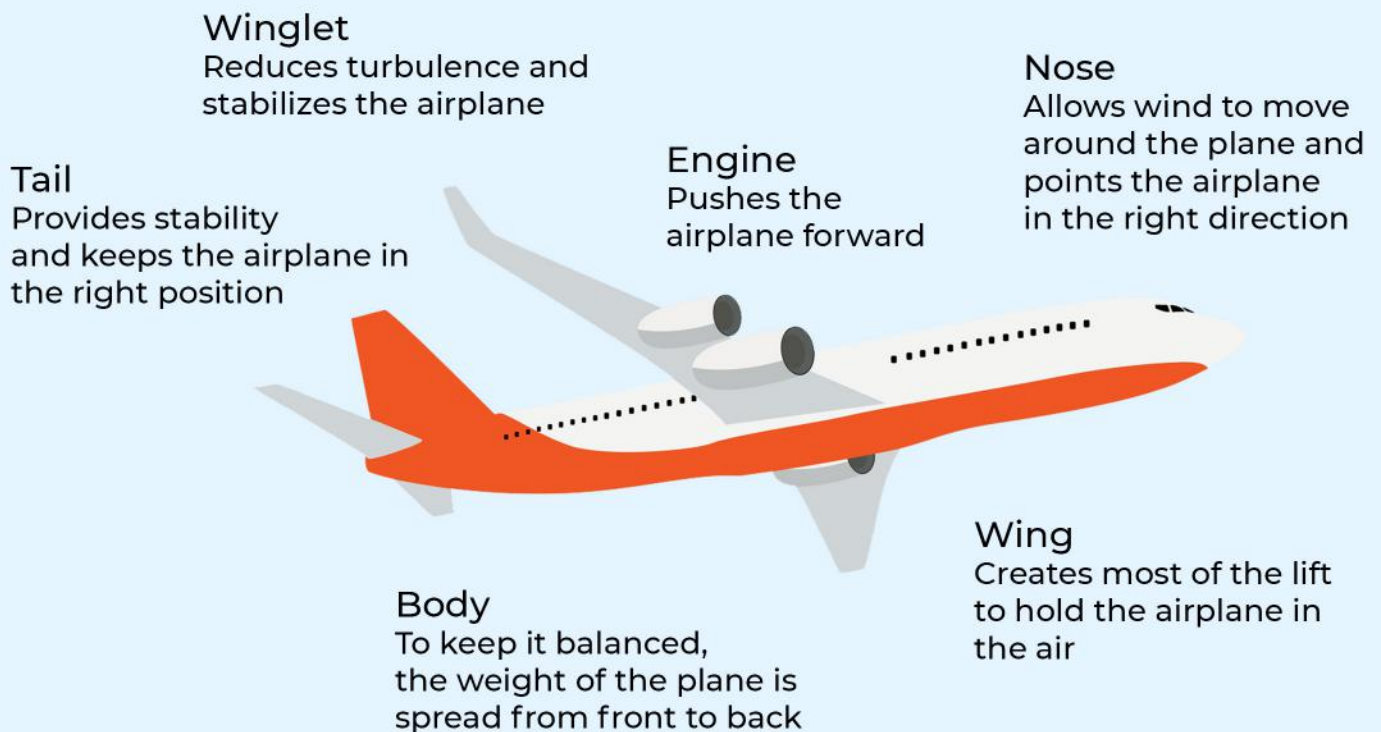
12. (Optional) Paint your plane however you like. Let your imagination roam free!



13. Your plane is ready to take flight!

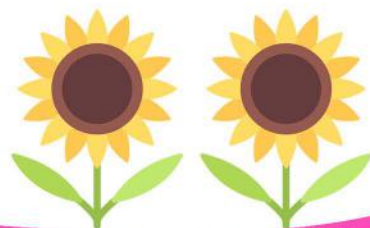
HOW DO PLANES FLY?

Airplane parts and functions





ANSWERS



SPOT THE ERROR

Answer Key



Did you know?

1L Water Bottle: Liquids, aerosols or gels which are in containers larger than 100ml are not allowed on your hand carry luggage

Peanut Butter: Jams and spreads are considered liquids. If your jar is above 100ml, you will not be able to bring it with you!

Scissors: Scissors with sharp blades will be confiscated.

Bananas and apples: Food produce is not allowed if you are travelling to countries like Australia and New Zealand!

MATCH THE JOB

Answer key



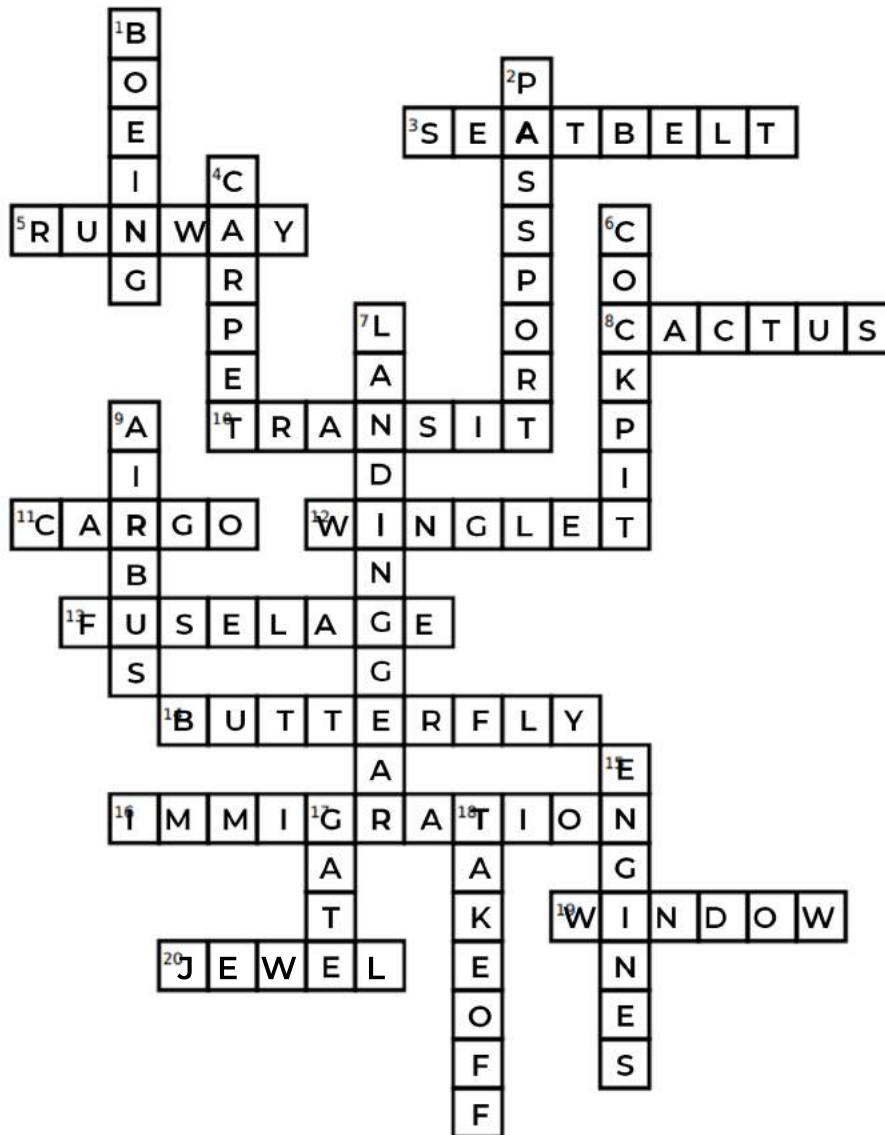
BAGGAGE HANDLING PROCESS

Answer Key



CROSSWORD PUZZLE

Answer Key



Down:

Aircraft facts

- The American aircraft manufacturing company
- The section of the plane where pilots control the plane from
- The part of the plane that touches the floor first when landing
- The floors around Changi Airport's transit areas are covered with this
- The European aircraft manufacturing company
- The two cylinder-shaped machines on each wing
- The process in which an aircraft leaves the ground

Changi facts

- The document needed to leave or enter a country
- The area where passengers wait to board their flight

Across:

Aircraft facts

- The equipment on each seat to keep passengers safe
- The road where aircrafts take off
- In addition to passengers and luggage, airplanes also carry this
- The bent/folded tip of an aircraft's wing
- The main body of an aircraft
- Where passengers can look out from the aircraft

Changi facts

- This is a prickly plant that is common in dry deserts and can be found in Terminal 1
- The process in which passengers land at the airport to take another flight to another destination
- There is a garden full of this flying colourful insect in Terminal 3
- The zone where passengers' passports are stamped before they collect their luggage at arrival
- The building with the Rain Vortex at Changi Airport