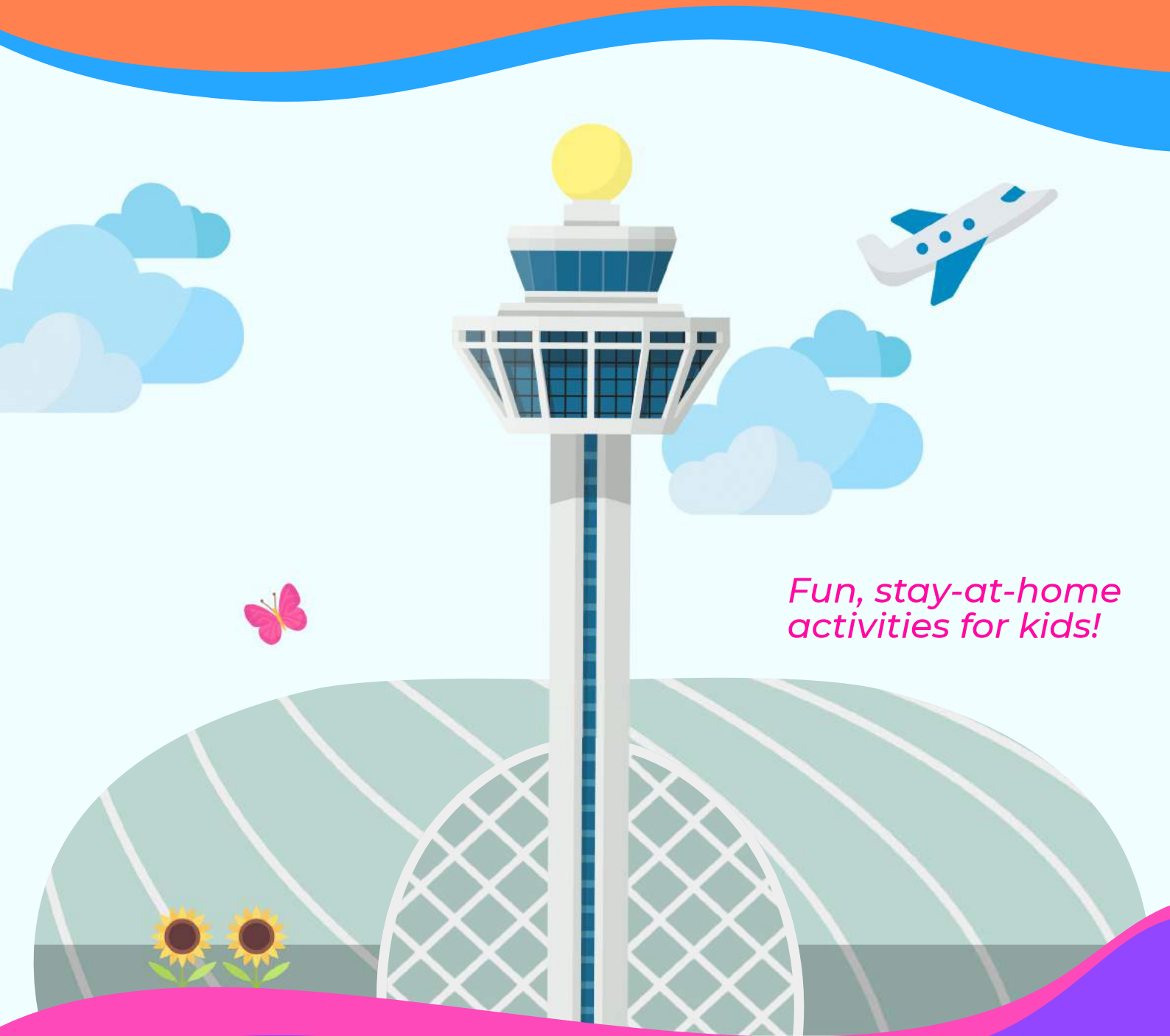


# CHANGI KIDS CLUB

*Activity Book for 5 to 7 year olds*



*Fun, stay-at-home  
activities for kids!*

*Name*

# CONTENTS

Cover Page	1
Contents	2
<b>Activities</b>	
Match the Job	3
Pack your own luggage	4 - 7
Maze Game	8 - 9
Connect the dots	10 - 11
Find MAX	12
Word Search	13 - 14
<b>Answers</b>	
Match the Job	15
Maze Game	16
Find MAX	17
Word Search	18
	19



# MATCHING GAME

Draw lines to match the job at Changi to the right task!

Security Officer

Keeps the carpets  
clean and tidy

Cleaning Staff

Makes sure the  
terminal runs  
smoothly

Baggage Handler

Responds to fires and  
rescue operations

Duty Terminal  
Manager

Transfers baggage  
to plane

Air Traffic Control  
Officer

Keeps the airport  
safe from threats

Horticulturist

Maintains and chooses  
plants around Changi

Airport Emergency  
Services (AES) Staff

Gives pilots landing  
and take-off  
instructions



## *Did you know?*

Changi Airport Group, the operators of Changi Airport, employs over 1800 people! That includes over 500 staff in Airport Emergency Services - the group of people responsible for responding to rescues and fires around Changi Airport. These people work 24 hours a day, 7 days a week to ensure any accidents are quickly attended to.

# PACK-YOUR-OWN LUGGAGE

## Step 1: Build Your Luggage (Page 9)

- a. Print out template.
- b. Cut out the white parts.
- c. Fold along the dark brown lines.

## Step 2: Decorate Your Luggage (Page 10)

- a. Print out sticker cut-outs.
- b. Cut out the sticker cut-outs
- c. Using glue, paste the sticker cut-outs on your luggage.

## Step 3: Get Packing! (Page 11)

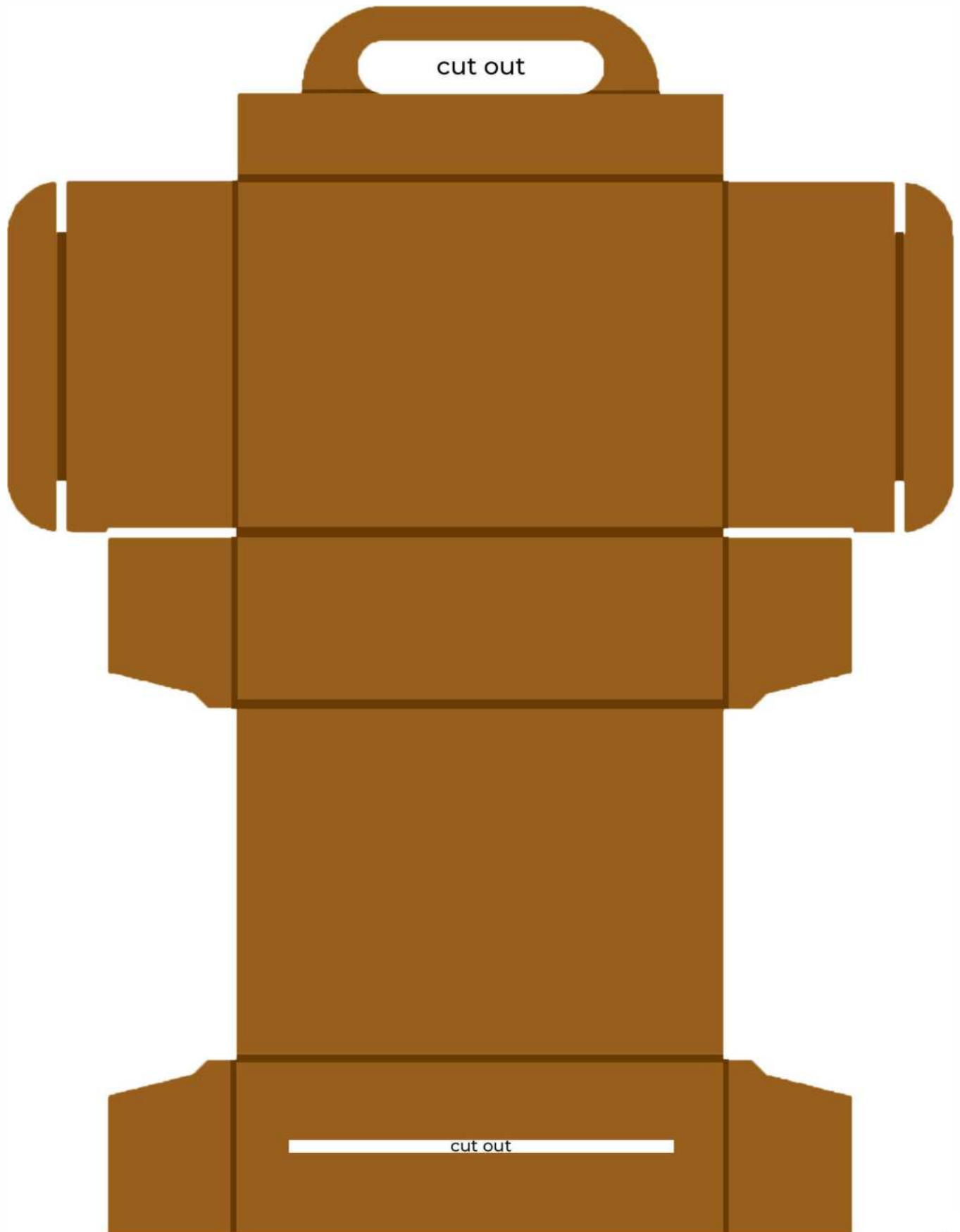
- a. Print out items.
- b. Cut out the items.
- c. Pack your luggage.



**FINAL PRODUCT**

# PACK-YOUR-OWN LUGGAGE

## LUGGAGE TEMPLATE

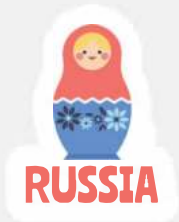


*do not print this page double-sided*



# PACK-YOUR-OWN LUGGAGE

## LUGGAGE STICKERS

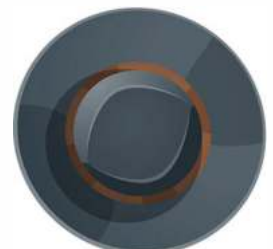




# PACK-YOUR-OWN LUGGAGE

## LUGGAGE ITEMS

Cut them out and place them in your luggage!



# MAZE GAME

Guide the caterpillar through the maze as it transforms into a beautiful butterfly!



**Hint:** The pupa is located at the halfway point of your journey. Keep going!



# MAZE GAME

## Life Cycle of a Butterfly



### Stage 1: Egg

A female butterfly will lay its eggs on the leaves or stems of a plant. Eggs come in all shapes and textures. Some are round, others are oval and some can even be cylindrical! These eggs will hatch into caterpillars in a few weeks.



### Stage 2: Caterpillar

When ready to hatch, the caterpillars eat their way out of the egg and start eating the leaves of a plant. During this stage, their skin is being shed four to five times, with the caterpillar growing each time!



### Stage 3: Pupa

Once fully grown, the caterpillar forms itself into a pupa. During this time, a hardened case forms around the pupa to protect it from predators and extreme weather conditions. And inside, the tissue, limbs and organs of the caterpillar transform into a butterfly.



### Stage 4: Butterfly

When the butterfly is ready to emerge, the case around the pupa splits open. But its wings are wet, soft and wrinkled against its body. Once the wings are dry, the butterfly pumps a liquid called hemolymph into them to become big and strong. And when fit for flight, the beautiful butterfly takes to the air!



### DID YOU KNOW?

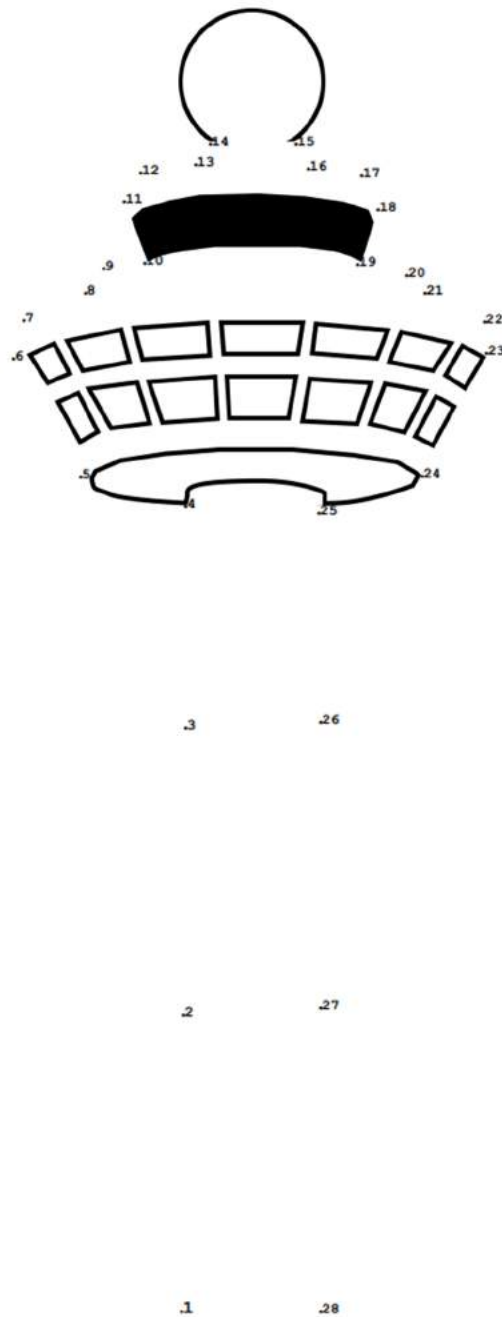
You can encounter over 1,000 tropical butterflies from as many as 40 species during the different seasons of the year at Changi Airport's Butterfly Garden!



Butterfly Garden Terminal 3 Transit

# JOIN THE DOTS

Join the dots of things you can see in Changi!  
Can you guess what they are?

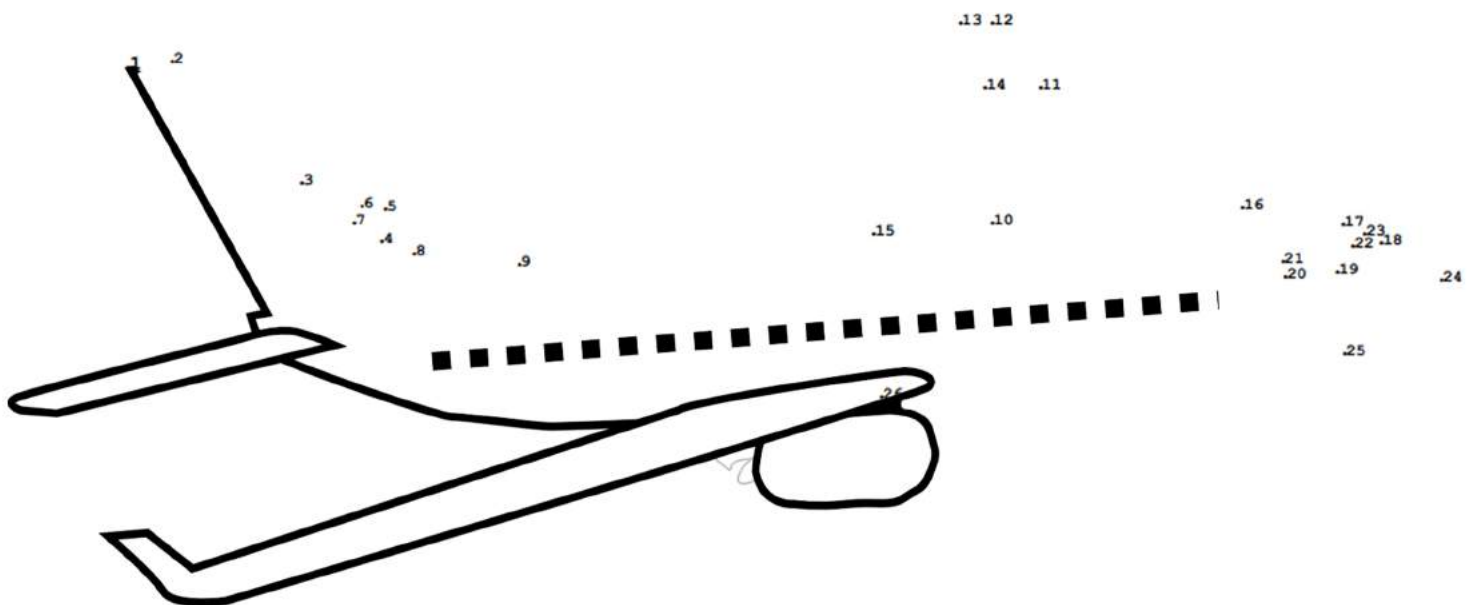


## ***Did you know?***

Changi Airport's control tower has a team of Air Traffic Control officers that work 24 hours a day! They tell planes which runway to go for take-off and landing. Last year, there was a flight landing or taking off every 80 seconds. That's just a little over a minute!

# JOIN THE DOTS

Join the dots of things you can see in Changi!  
Can you guess what they are?



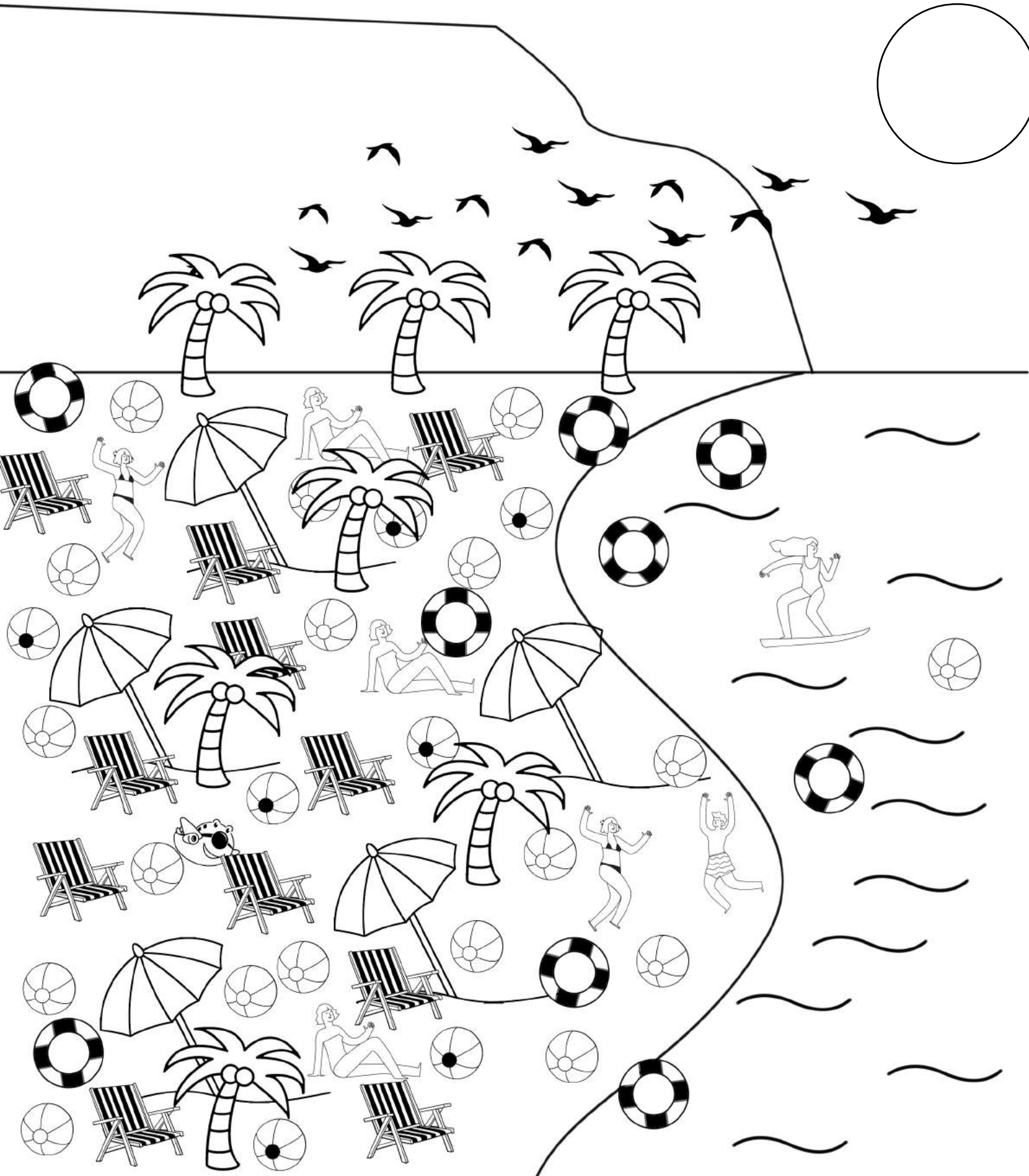
## *Did you know?*

Singapore witnessed its first plane landing in 1919 at an old race course in Farrer Park!  
4 Australians landed in Singapore as part of a plane race from London, UK to Darwin, Australia. The Australian crew eventually won the race, taking 27 days and 20 hours. That's a lot longer than an indirect flight from London to Darwin via Singapore today, which takes less than 20 hours!

# FIND MAX



Find Changi Airport's mascot, Max, on the beach below!





# WORD SEARCH

Help to search for Changi's Cargo!



In addition to helping passengers get from place to place, planes also transport many different types of goods by air called cargo.

*See if you can find some of these cargo-related words!*

Meat

Flowers

Medicine

Vaccines

Clothes

Watches



R	L	S	S	C	P	A	I	N	C
G	T	Z	E	Y	E	S	V	S	D
M	W	H	H	N	N	U	G	E	Y
E	F	T	T	S	I	T	V	H	B
A	K	I	O	R	C	C	D	C	F
T	D	J	L	E	I	W	C	T	Q
J	H	I	C	W	D	Y	P	A	U
S	K	B	S	O	E	P	H	W	V
B	U	X	R	L	M	R	U	Z	F
Y	H	U	Z	F	K	N	T	W	J







Medicines and vaccines lose their effectiveness if exposed to undesirable temperatures for a long period.



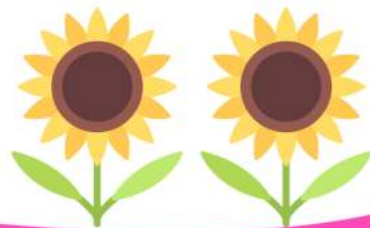
Perishables like meat also turn bad when they are not kept at a low temperature.



This is why Changi has separate rooms built with alarm systems that trigger alerts when temperature changes exceed the set range. This helps Changi to prevent the loss of quality of the goods handled!



# ANSWERS



# MATCHING GAME

Answer key



# MAZE GAME

Answer Key

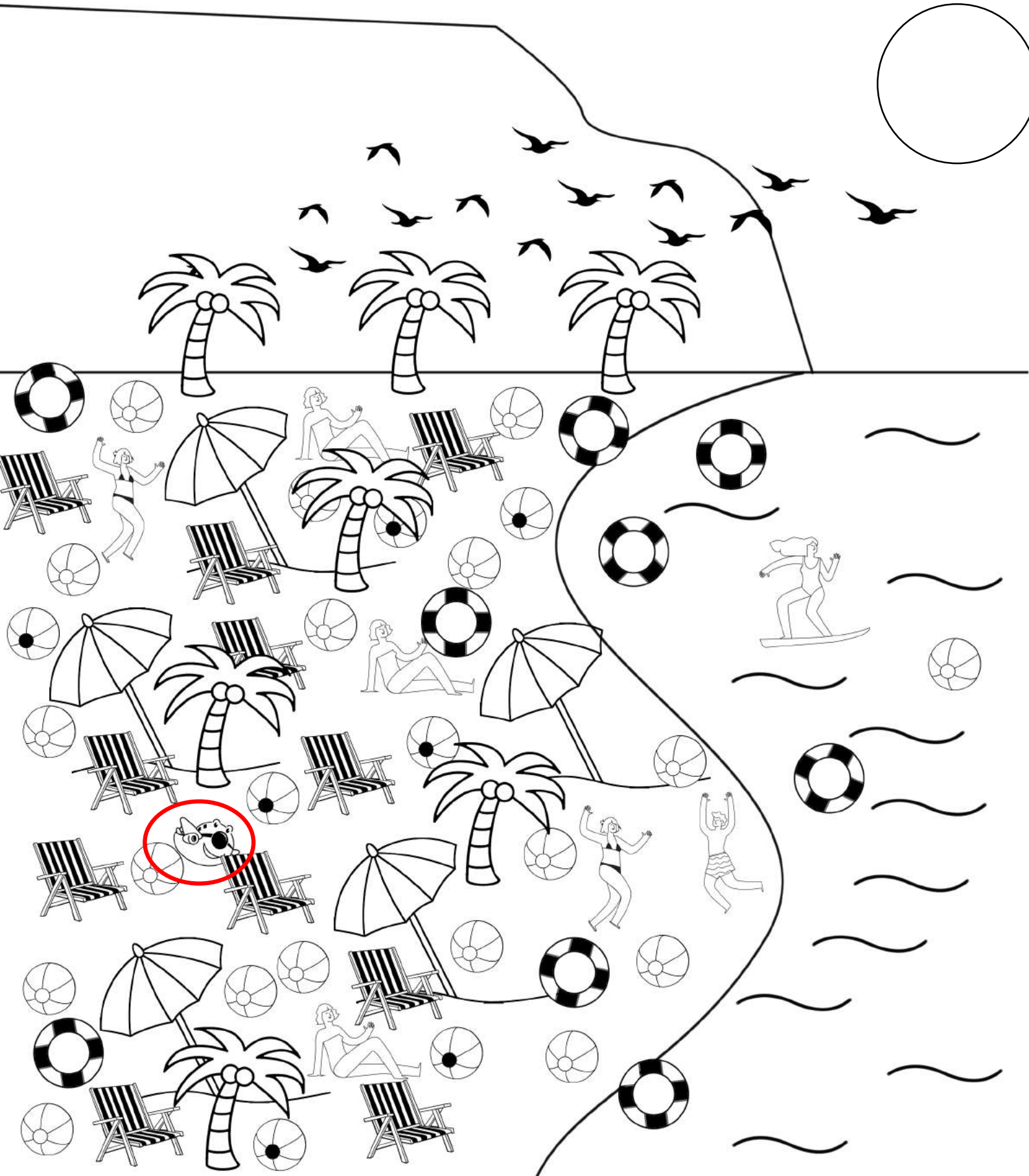




# FIND MAX



## Answer Key





# WORD SEARCH

Answer Key

