

## **Terminal 5 artist impressions**

Please credit the images to Changi Airport Group.

### **Aerial view of T5**



*Terminal 5 is an integral part of the Changi East development, which will position Singapore to capture future growth opportunities in the region.*

### **Roof leaves**



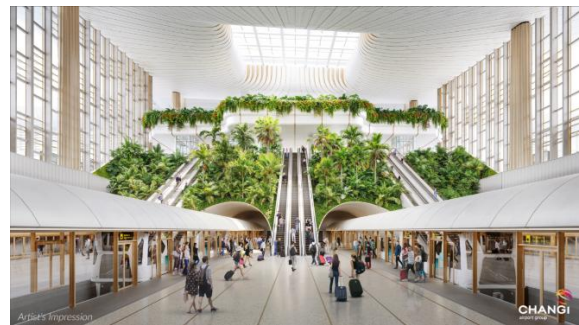
*Terminal 5's roof design is an assembly of overlapping roof leaves with varying heights, creating a variety of spaces that are more human-scale. This provides a cosy feel within the mega terminal.*

### **Departure Kerbside**



*The curved shapes of the roof allow natural light to filter through, evoking a sense of dynamism and excitement of flight.*

### **Intra-Terminal Train Station**



*All the buildings in Terminal 5 will be connected via an automated people mover system. There will also be an extension to Terminal 2, where passengers can connect to the rest of Changi Airport.*

### Arrival Immigration Hall



*Arriving passengers can conveniently hop onto the automated people mover system which will bring them directly to the Arrival Immigration Hall.*

### Baggage Claim Hall



*Passengers are greeted by Terminal 5's vertical gardens as they make their way to the baggage claim belt, providing them with a warm welcome to Singapore.*

### Terminal 5 MRT Station



*The sculpted columns and ceilings of the underground MRT station mimic rain trees, creating a connection to nature.*

### Community space



*T5 will be a place of shared experiences where precious memories with friends and family are forged.*